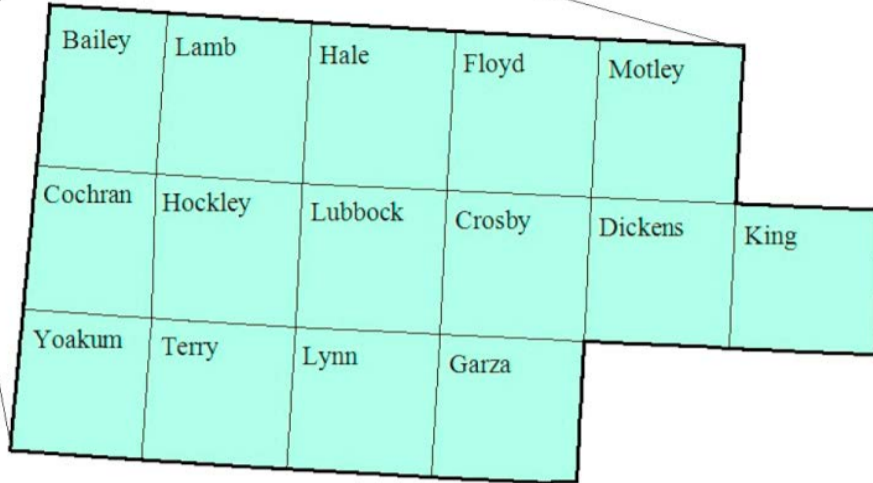


South Plains Workforce Development Area

September 2016



WDA Labor Force Statistics

	Sep-16	Aug-16	Sep-15	OTY
CLF	204,283	204,945	203,413	870
Employed	196,065	196,346	195,488	577
Unemployed	8,218	8,599	7,925	293
Rate	4.0%	4.2%	3.9%	0.1%

Texas Labor Force Statistics

	Sep-16	Aug-16	Sep-15	OTY
CLF	13,416,799	13,378,431	13,067,230	349,569
Employed	12,754,685	12,709,461	12,480,453	274,232
Unemployed	662,114	668,970	586,777	75,337
Rate	4.9%	5.0%	4.5%	0.4%

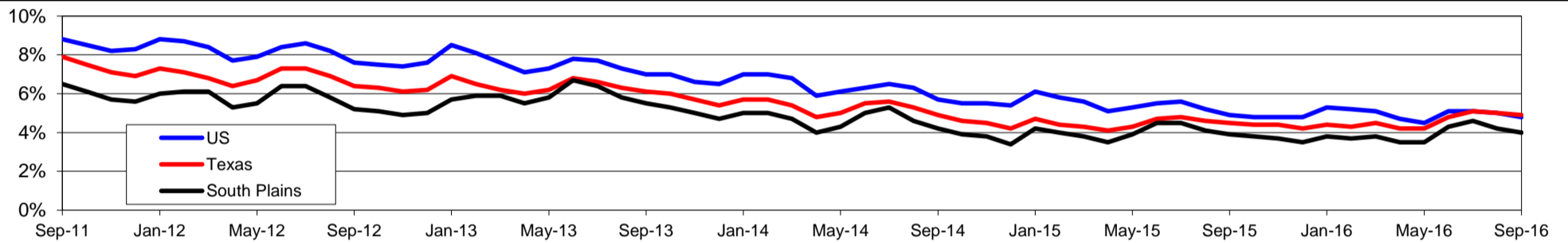
US Labor Force Statistics

	Sep-16	Aug-16	Sep-15	OTY
CLF	159,636,000	159,800,000	156,607,000	3,029,000
Employed	151,977,000	151,804,000	148,980,000	2,997,000
Unemployed	7,658,000	7,996,000	7,628,000	30,000
Rate	4.8%	5.0%	4.9%	-0.1%

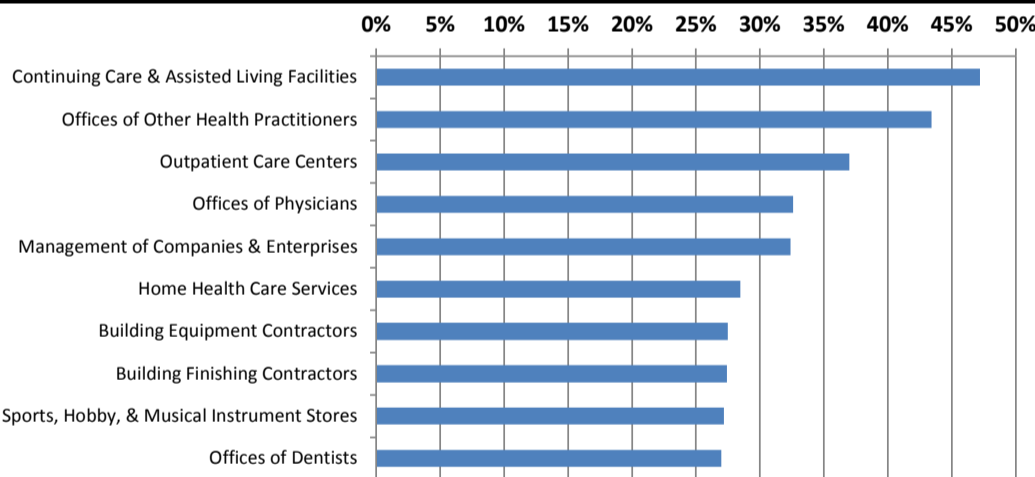
Continued Claims for the Week of the 12th

	Sep-16	Aug-16	Sep-15	OTY
WDA	956	1,261	1,359	-403
Texas	132,202	148,897	134,736	-2,534

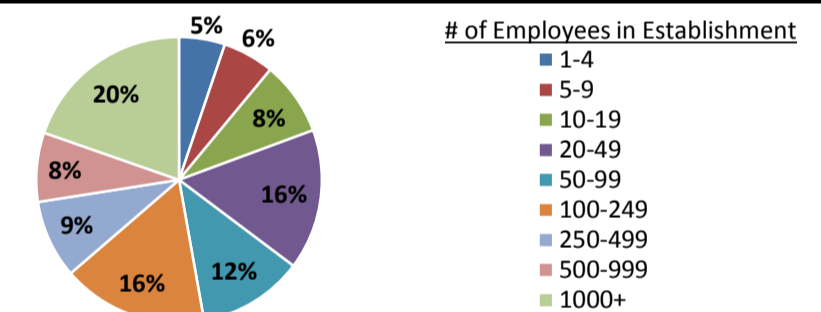
Historical Unemployment Rates



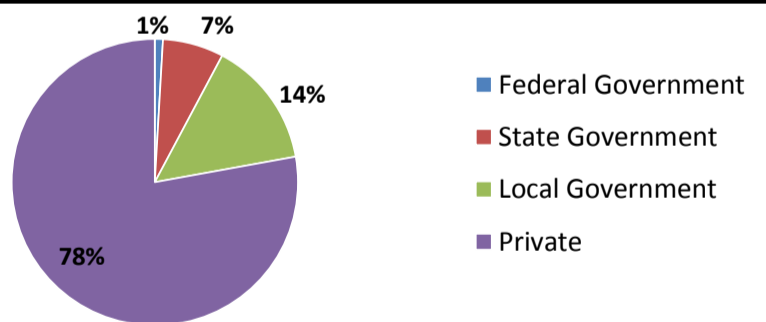
Projected Fastest Growing Industries in WDA (% growth 2014-2024)



Employment by Size Class (1st Quarter 2016)



Employment by Ownership (1st Quarter 2016)



Average Weekly Wage (1st Quarter 2016)

	Q1 2016	Q4 2015	Q1 2015	Change	
				Quarter	Year
WDA	\$757	\$832	\$768	-\$75	-\$11
Texas	\$1,066	\$1,099	\$1,089	-\$33	-\$23
US	\$1,043	\$1,083	\$1,048	-\$40	-\$5

Employment by Industry (1st Quarter 2016, Percent Change)

Industry	Employment	% of total	% Change	
			Quarter	Year
Natural resources and mining	9,308	5.3%	-19.6%	-13.0%
Construction	8,350	4.7%	-2.5%	0.1%
Manufacturing	6,169	3.5%	-3.9%	-6.2%
Trade, transportation and utilities	39,163	22.2%	-1.7%	-0.2%
Information	3,904	2.2%	-1.9%	-2.7%
Financial activities	8,869	5.0%	-0.7%	1.2%
Professional and business services	12,992	7.4%	-2.4%	3.9%
Education and health services	54,584	30.9%	-0.3%	2.4%
Leisure and hospitality	20,296	11.5%	-1.5%	1.9%
Other services	5,803	3.3%	-6.1%	-2.9%
Public administration	7,260	4.1%	-0.3%	3.0%
Total	176,698	100.0%	-2.6%	0.2%

Employment by Industry (1st Quarter 2016)

