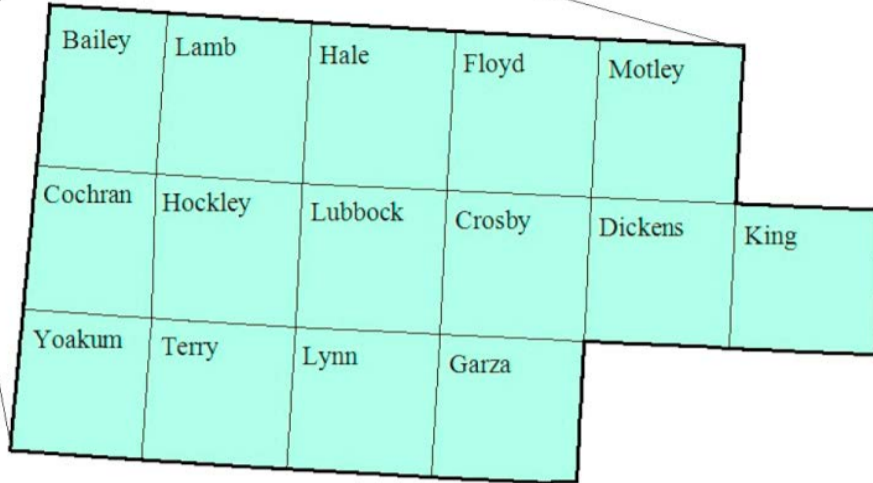


South Plains Workforce Development Area

October 2016



WDA Labor Force Statistics

	Oct-16	Sep-16	Oct-15	OTY
CLF	203,035	204,477	203,720	-685
Employed	195,741	196,273	196,033	-292
Unemployed	7,294	8,204	7,687	-393
Rate	3.6%	4.0%	3.8%	-0.2%

Texas Labor Force Statistics

	Oct-16	Sep-16	Oct-15	OTY
CLF	13,334,556	13,416,525	13,114,424	220,132
Employed	12,749,778	12,754,630	12,531,868	217,910
Unemployed	584,778	661,895	582,556	2,222
Rate	4.4%	4.9%	4.4%	0.0%

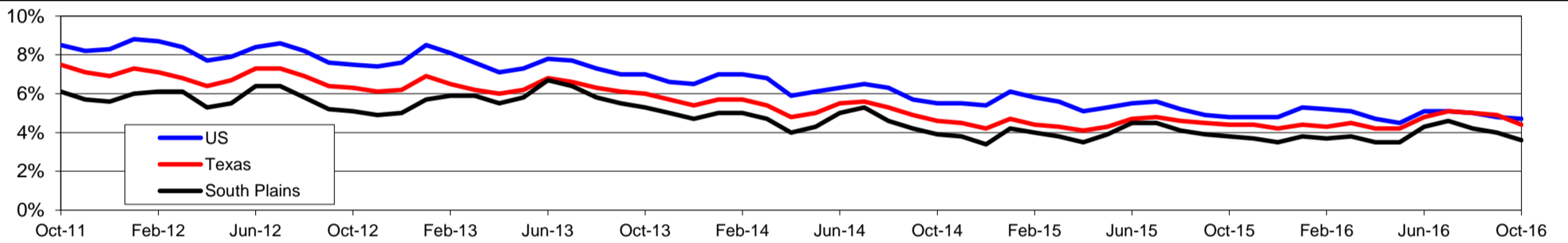
US Labor Force Statistics

	Oct-16	Sep-16	Oct-15	OTY
CLF	159,783,000	159,636,000	157,313,000	2,470,000
Employed	152,335,000	151,977,000	149,716,000	2,619,000
Unemployed	7,447,000	7,658,000	7,597,000	-150,000
Rate	4.7%	4.8%	4.8%	-0.1%

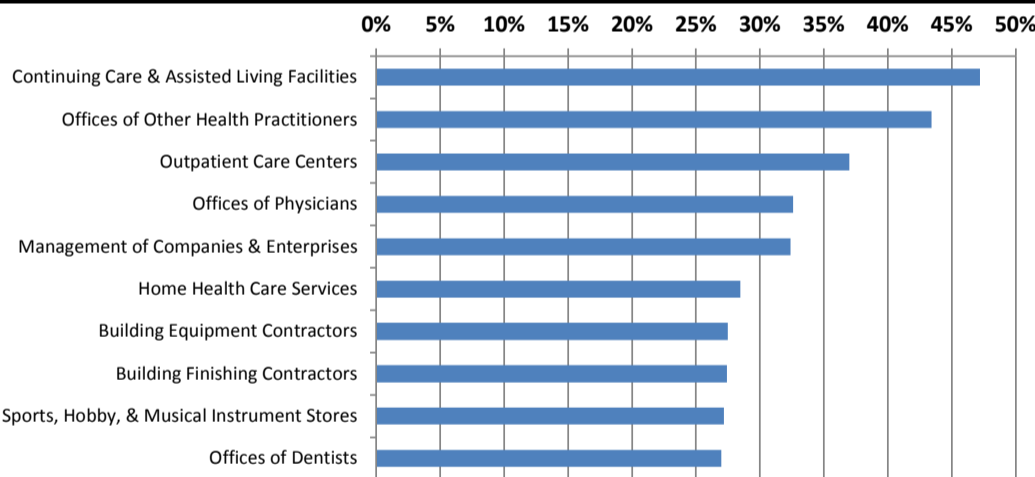
Continued Claims for the Week of the 12th

	Oct-16	Sep-16	Oct-15	OTY
WDA	908	964	1,182	-274
Texas	123,806	133,309	129,360	-5,554

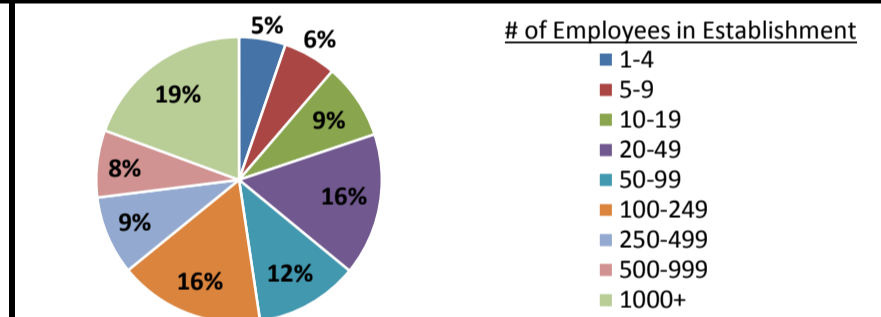
Historical Unemployment Rates



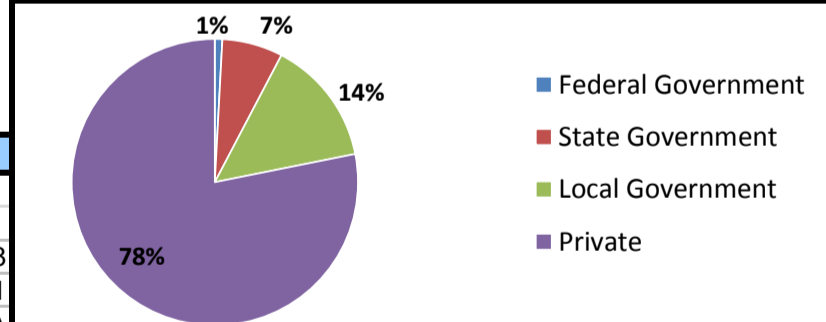
Projected Fastest Growing Industries in WDA (% growth 2014-2024)



Employment by Size Class (2nd Quarter 2016)



Employment by Ownership (2nd Quarter 2016)



Average Weekly Wage (2nd Quarter 2016)

	Q2 2016	Q1 2016	Q2 2015	Change	
				Quarter	Year
WDA	\$756	\$754	\$748	\$2	\$8
Texas	\$1,000	\$1,063	\$989	-\$63	\$11
US	N/A	\$1,083	\$1,048	N/A	N/A

Employment by Industry (2nd Quarter 2016, Percent Change)

Industry	Employment	% of total	% Change	
			Quarter	Year
Natural resources and mining	9,797	5.4%	3.6%	-5.6%
Construction	8,772	4.9%	3.3%	1.8%
Manufacturing	6,180	3.4%	-0.2%	-3.6%
Trade, transportation and utilities	39,421	21.9%	0.4%	0.0%
Information	3,910	2.2%	0.2%	-4.1%
Financial activities	8,915	4.9%	0.6%	1.4%
Professional and business services	13,272	7.4%	1.1%	3.1%
Education and health services	55,080	30.5%	0.7%	3.5%
Leisure and hospitality	21,485	11.9%	4.8%	4.9%
Other services	6,160	3.4%	3.6%	-1.4%
Public administration	7,315	4.1%	0.3%	2.8%
Total	180,307	100.0%	1.5%	1.5%

Employment by Industry (2nd Quarter 2016)

