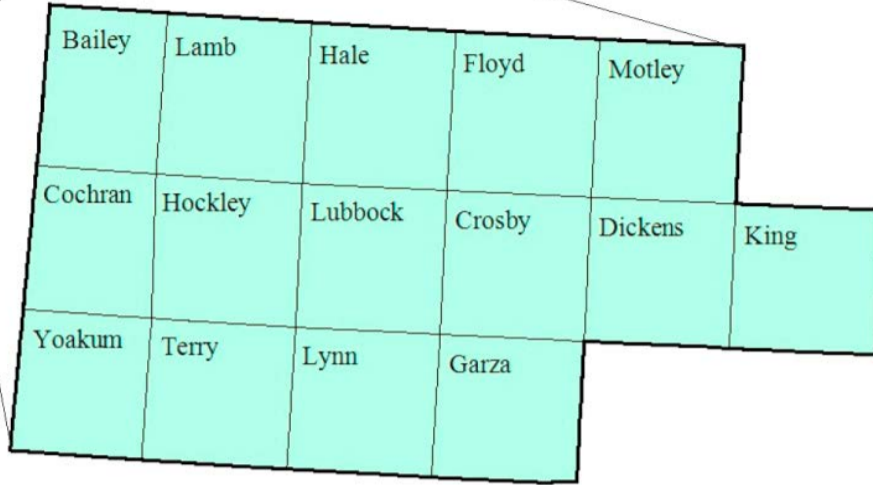


South Plains Workforce Development Area

November 2016



WDA Labor Force Statistics

	Nov-16	Oct-16	Nov-15	OTY
CLF	203,573	202,765	202,831	742
Employed	196,684	195,483	195,334	1,350
Unemployed	6,889	7,282	7,497	-608
Rate	3.4%	3.6%	3.7%	-0.3%

Texas Labor Force Statistics

	Nov-16	Oct-16	Nov-15	OTY
CLF	13,391,218	13,334,552	13,147,382	243,836
Employed	12,824,325	12,749,955	12,564,078	260,247
Unemployed	566,893	584,597	583,304	-16,411
Rate	4.2%	4.4%	4.4%	-0.2%

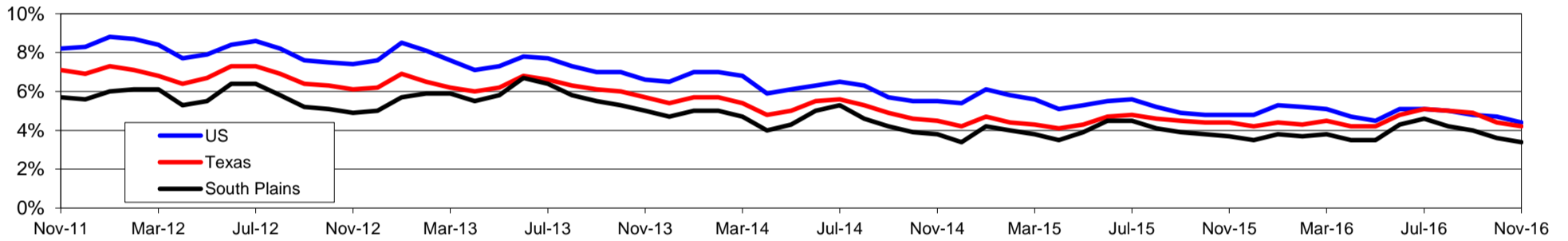
US Labor Force Statistics

	Nov-16	Oct-16	Nov-15	OTY
CLF	159,451,000	159,783,000	157,340,000	2,111,000
Employed	152,385,000	152,335,000	149,766,000	2,619,000
Unemployed	7,066,000	7,447,000	7,573,000	-507,000
Rate	4.4%	4.7%	4.8%	-0.4%

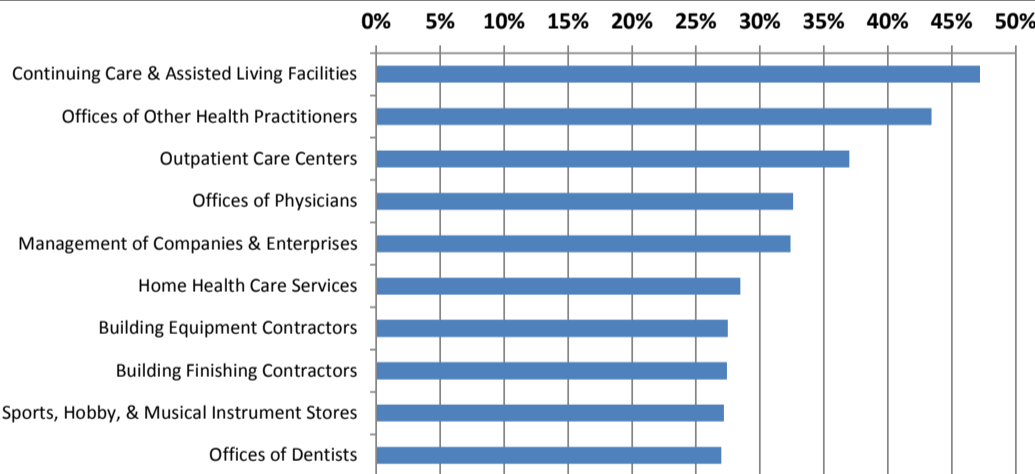
Continued Claims for the Week of the 12th

	Nov-16	Oct-16	Nov-15	OTY
WDA	894	916	1,161	-267
Texas	125,542	124,901	134,003	-8,461

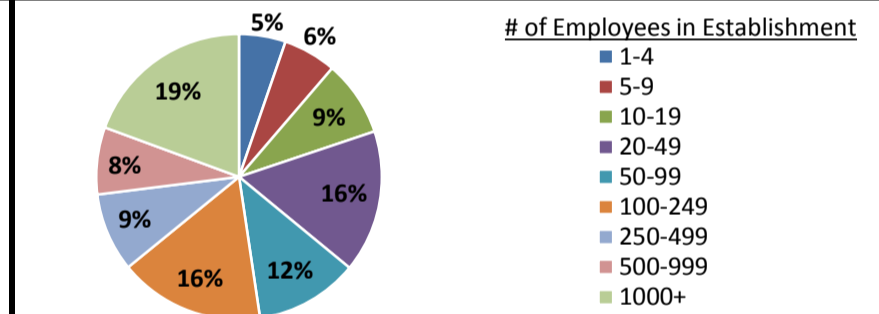
Historical Unemployment Rates



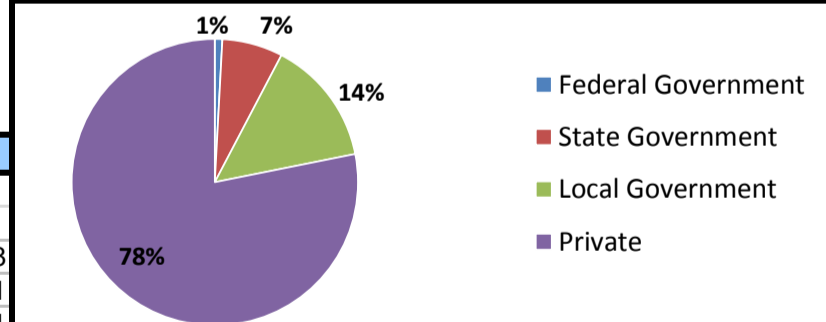
Projected Fastest Growing Industries in WDA (% growth 2014-2024)



Employment by Size Class (2nd Quarter 2016)



Employment by Ownership (2nd Quarter 2016)



Average Weekly Wage (2nd Quarter 2016)

	Q2 2016	Q1 2016	Q2 2015	Change	
				Quarter	Year
WDA	\$756	\$754	\$748	\$2	\$8
Texas	\$1,000	\$1,063	\$989	-\$63	\$11
US	\$989	\$1,042	\$968	-\$53	\$21

Employment by Industry (2nd Quarter 2016, Percent Change)

Industry	Employment	% of total	% Change	
			Quarter	Year
Natural resources and mining	9,797	5.4%	3.6%	-5.6%
Construction	8,772	4.9%	3.3%	1.8%
Manufacturing	6,180	3.4%	-0.2%	-3.6%
Trade, transportation and utilities	39,421	21.9%	0.4%	0.0%
Information	3,910	2.2%	0.2%	-4.1%
Financial activities	8,915	4.9%	0.6%	1.4%
Professional and business services	13,272	7.4%	1.1%	3.1%
Education and health services	55,080	30.5%	0.7%	3.5%
Leisure and hospitality	21,485	11.9%	4.8%	4.9%
Other services	6,160	3.4%	3.6%	-1.4%
Public administration	7,315	4.1%	0.3%	2.8%
Total	180,307	100.0%	1.5%	1.5%

Employment by Industry (2nd Quarter 2016)

