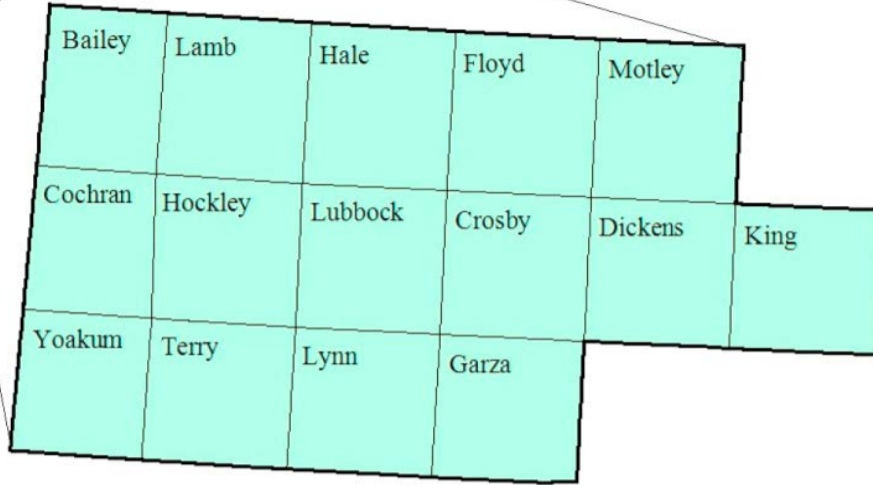


South Plains Workforce Development Area

May 2016



WDA Labor Force Statistics

	May-16	Apr-16	May-15	OTY
CLF	206,977	206,349	205,404	1,573
Employed	199,722	199,156	197,494	2,228
Unemployed	7,255	7,193	7,910	-655
Rate	3.5%	3.5%	3.9%	-0.4%

Texas Labor Force Statistics

	May-16	Apr-16	May-15	OTY
CLF	13,281,151	13,256,609	13,104,878	176,273
Employed	12,722,051	12,696,103	12,539,222	182,829
Unemployed	559,100	560,506	565,656	-6,556
Rate	4.2%	4.2%	4.3%	-0.1%

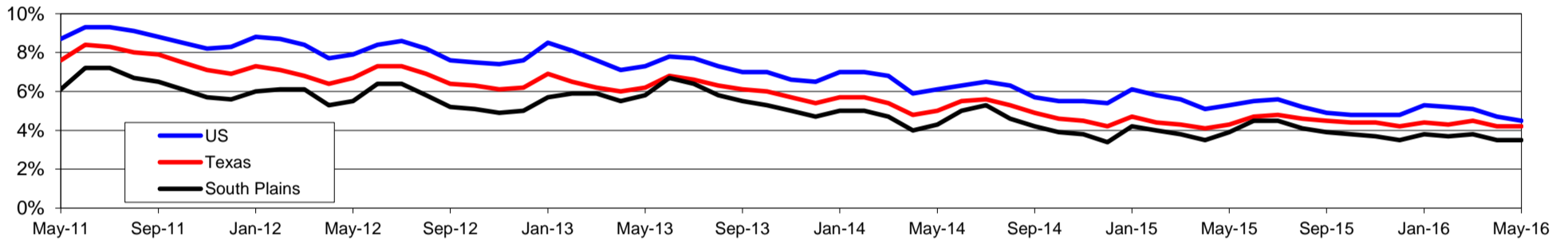
US Labor Force Statistics

	May-16	Apr-16	May-15	OTY
CLF	158,800,000	158,488,000	157,719,000	1,081,000
Employed	151,594,000	151,075,000	149,349,000	2,245,000
Unemployed	7,207,000	7,413,000	8,370,000	-1,163,000
Rate	4.5%	4.7%	5.3%	-0.8%

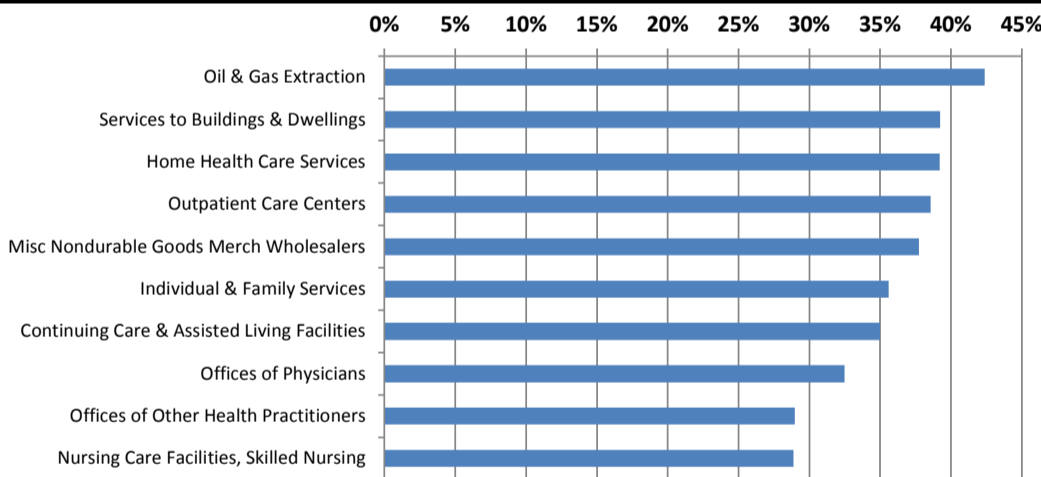
Continued Claims for the Week of the 12th

	May-16	Apr-16	May-15	OTY
WDA	1,358	1,420	1,604	-246
Texas	147,222	148,511	139,731	7,491

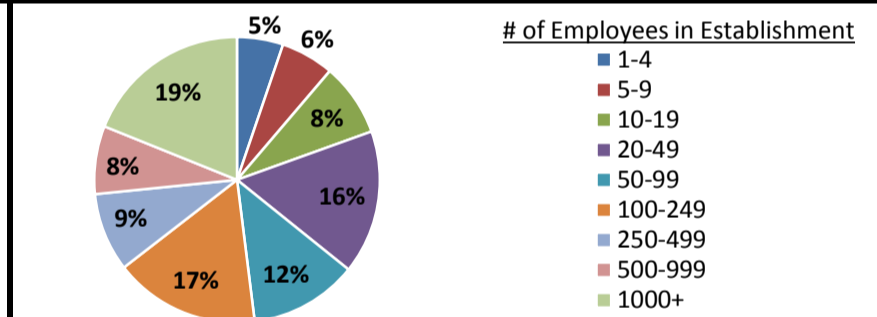
Historical Unemployment Rates



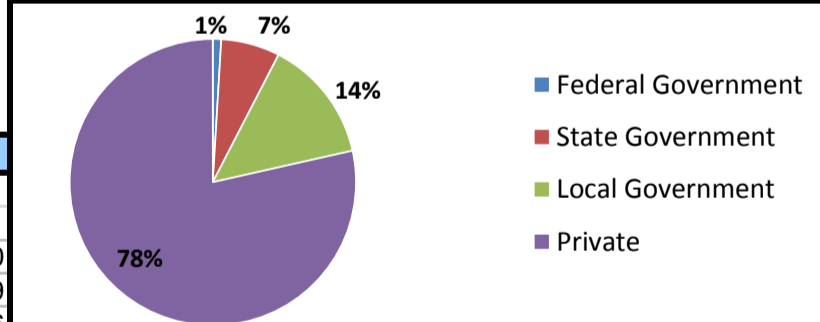
Projected Fastest Growing Industries in WDA (% growth 2012-2022)



Employment by Size Class (4th Quarter 2015)



Employment by Ownership (4th Quarter 2015)



Average Weekly Wage (4th Quarter 2015)

	Q4 2015	Q3 2015	Q4 2014	Change	
				Quarter	Year
WDA	\$831	\$775	\$811	\$56	\$20
Texas	\$1,099	\$999	\$1,070	\$100	\$29
US	\$1,082	\$974	\$1,036	\$108	\$46

Employment by Industry (4th Quarter 2015, Percent Change)

Industry	Employment	% of total	% Change	
			Quarter	Year
Natural resources and mining	11,573	6.4%	4.7%	-5.3%
Construction	8,567	4.7%	-1.6%	-4.2%
Manufacturing	6,421	3.5%	0.1%	-6.9%
Trade, transportation and utilities	39,859	22.0%	0.8%	-0.5%
Information	3,979	2.2%	-1.9%	-0.6%
Financial activities	8,925	4.9%	0.2%	2.0%
Professional and business services	13,303	7.3%	3.3%	1.8%
Education and health services	54,753	30.2%	4.0%	2.9%
Leisure and hospitality	20,660	11.4%	0.4%	3.4%
Other services	6,169	3.4%	-0.6%	2.4%
Public administration	7,280	4.0%	0.6%	1.8%
Total	181,489	100.0%	1.8%	0.6%

Employment by Industry (4th Quarter 2015)

