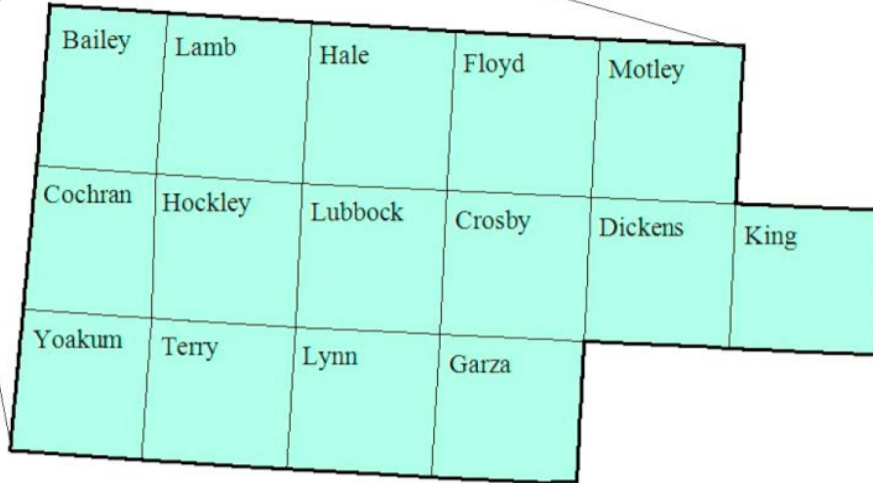


South Plains Workforce Development Area

March 2017



WDA Labor Force Statistics

	Mar-17	Feb-17	Mar-16	OTY
CLF	209,791	207,560	207,689	2,102
Employed	200,659	198,935	199,892	767
Unemployed	9,132	8,625	7,797	1,335
Rate	4.4%	4.2%	3.8%	0.6%

Texas Labor Force Statistics

	Mar-17	Feb-17	Mar-16	OTY
CLF	13,513,734	13,471,275	13,239,718	274,016
Employed	12,838,130	12,777,787	12,648,877	189,253
Unemployed	675,604	693,488	590,841	84,763
Rate	5.0%	5.1%	4.5%	0.5%

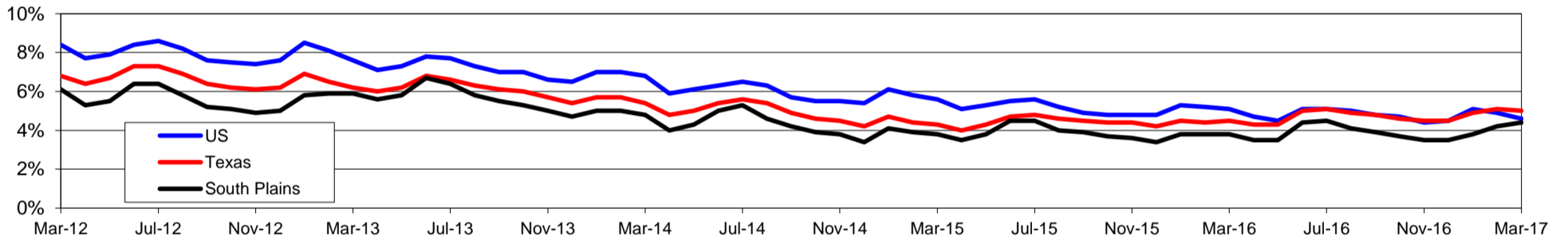
US Labor Force Statistics

	Mar-17	Feb-17	Mar-16	OTY
CLF	159,912,000	159,482,000	158,854,000	1,058,000
Employed	152,628,000	151,594,000	150,738,000	1,890,000
Unemployed	7,284,000	7,887,000	8,116,000	-832,000
Rate	4.6%	4.9%	5.1%	-0.5%

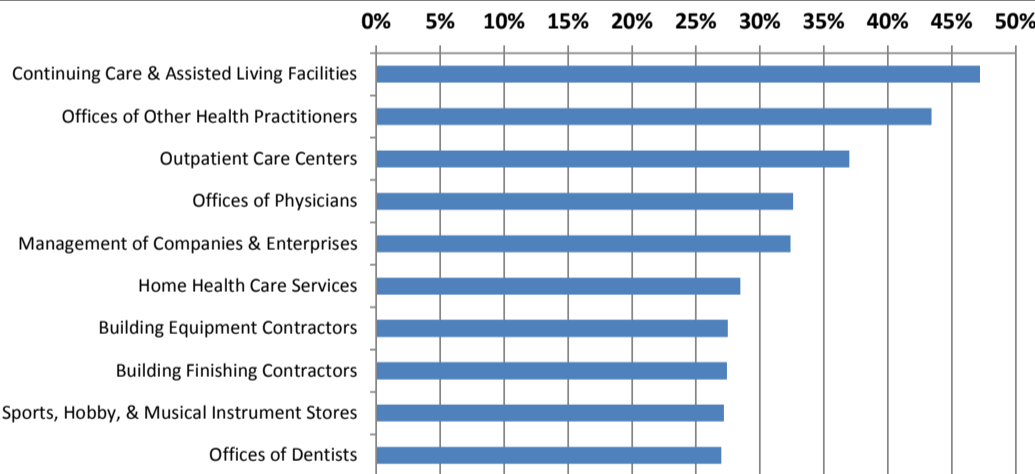
Continued Claims for the Week of the 12th

	Mar-17	Feb-17	Mar-16	OTY
WDA	1,569	1,104	1,503	66
Texas	122,950	132,086	145,342	-22,392

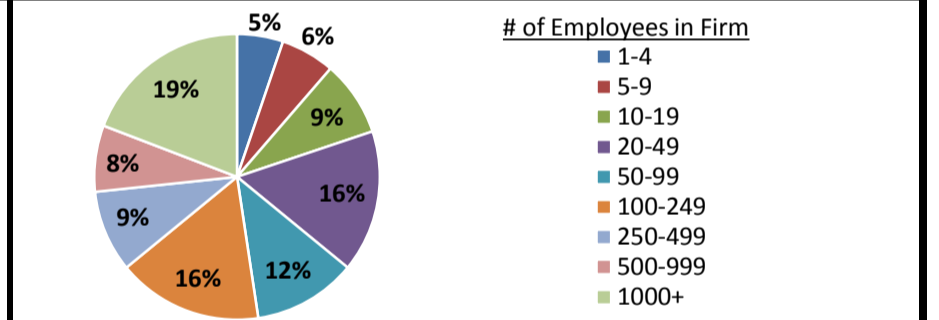
Historical Unemployment Rates



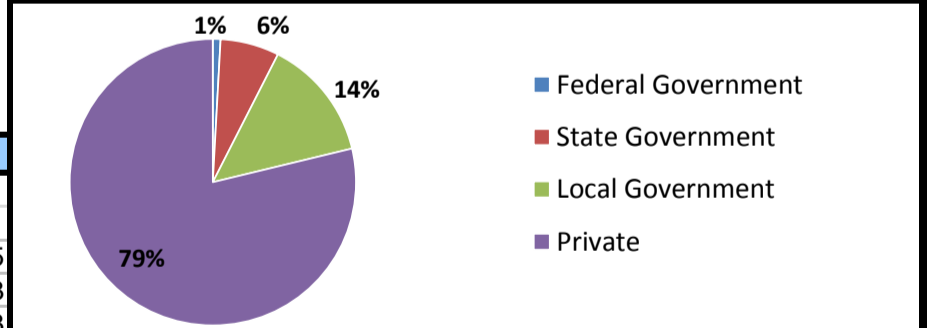
Projected Fastest Growing Industries in WDA (% growth 2014-2024)



Employment by Size Class (3rd Quarter 2016)



Employment by Ownership (3rd Quarter 2016)



Average Weekly Wage (3rd Quarter 2016)

	Q3 2016	Q2 2016	Q3 2015	Change	
				Quarter	Year
WDA	\$800	\$755	\$775	\$46	\$25
Texas	\$1,042	\$1,000	\$999	\$42	\$43
US	\$1,027	\$988	\$974	\$39	\$53

Employment by Industry (3rd Quarter 2016, Percent Change)

Industry	Employment	% of total	% Change	
			Quarter	Year
Natural resources and mining	10,386	5.8%	6.0%	-6.0%
Construction	8,936	5.0%	1.3%	2.7%
Manufacturing	6,203	3.5%	0.4%	-3.3%
Trade, transportation and utilities	39,449	22.0%	-0.1%	-0.3%
Information	3,899	2.2%	-0.3%	-3.9%
Financial activities	8,906	5.0%	0.0%	0.0%
Professional and business services	13,992	7.8%	5.1%	8.7%
Education and health services	52,976	29.5%	-3.6%	0.6%
Leisure and hospitality	21,372	11.9%	-0.8%	3.9%
Other services	6,060	3.4%	-1.4%	-2.3%
Public administration	7,432	4.1%	1.6%	2.7%
Total	179,611	100.0%	-0.4%	0.8%

Employment by Industry (3rd Quarter 2016)

