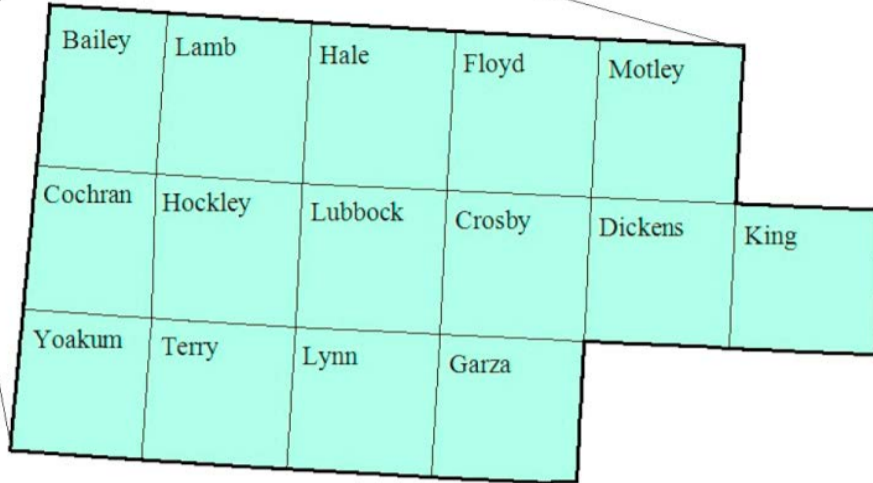


South Plains Workforce Development Area

June 2016



WDA Labor Force Statistics

	Jun-16	May-16	Jun-15	OTY
CLF	206,159	206,857	204,989	1,170
Employed	197,198	199,619	195,723	1,475
Unemployed	8,961	7,238	9,266	-305
Rate	4.3%	3.5%	4.5%	-0.2%

Texas Labor Force Statistics

	Jun-16	May-16	Jun-15	OTY
CLF	13,338,824	13,281,123	13,127,106	211,718
Employed	12,694,161	12,722,285	12,504,082	190,079
Unemployed	644,663	558,838	623,024	21,639
Rate	4.8%	4.2%	4.7%	0.1%

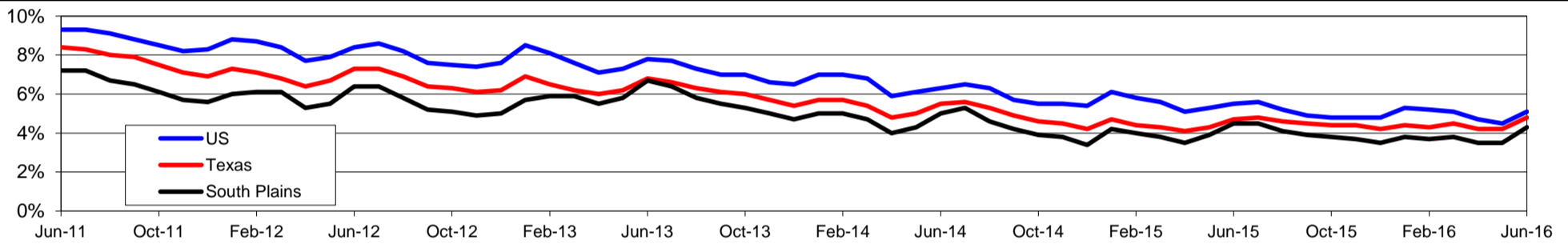
US Labor Force Statistics

	Jun-16	May-16	Jun-15	OTY
CLF	160,135,000	158,800,000	158,283,000	1,852,000
Employed	151,990,000	151,594,000	149,645,000	2,345,000
Unemployed	8,144,000	7,207,000	8,638,000	-494,000
Rate	5.1%	4.5%	5.5%	-0.4%

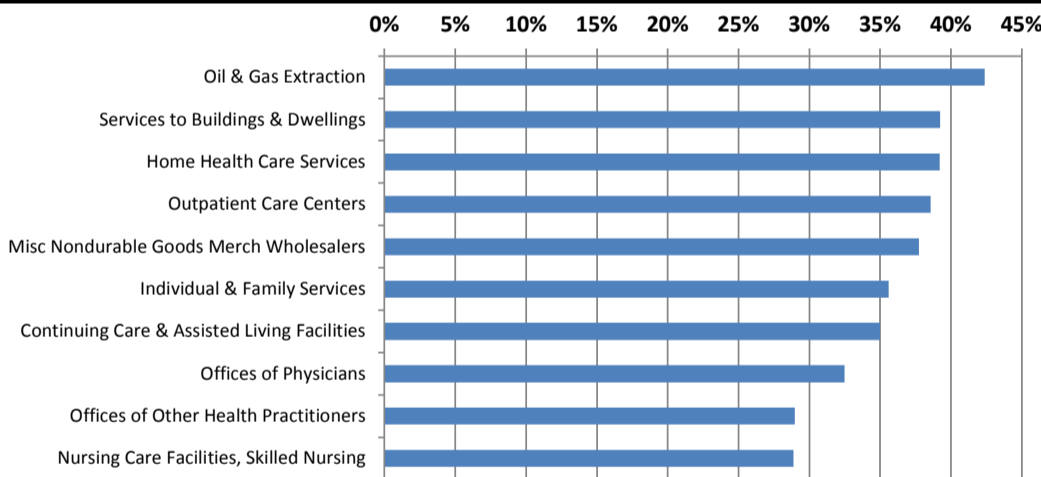
Continued Claims for the Week of the 12th

	Jun-16	May-16	Jun-15	OTY
WDA	1,760	1,365	2,041	-281
Texas	155,999	148,489	148,789	7,210

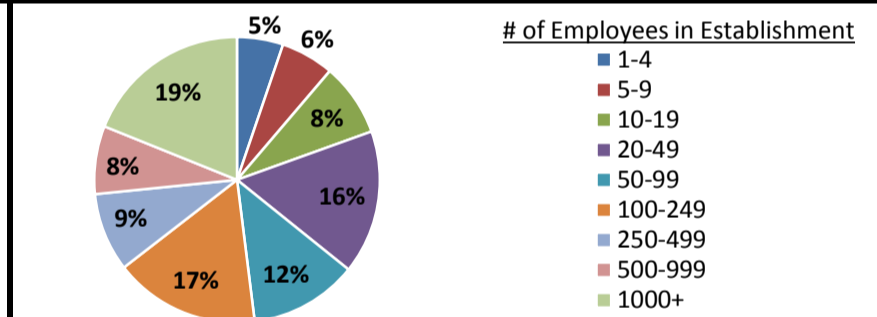
Historical Unemployment Rates



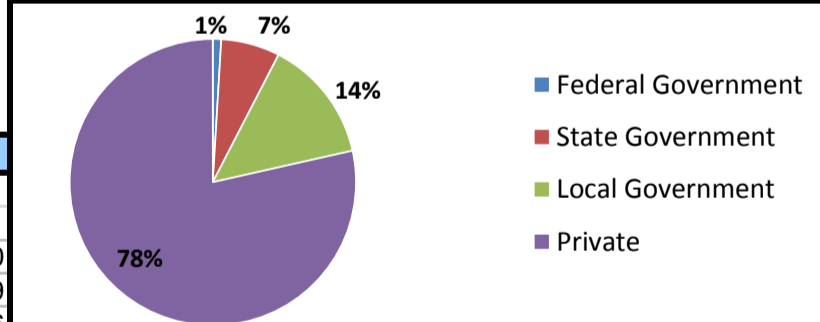
Projected Fastest Growing Industries in WDA (% growth 2012-2022)



Employment by Size Class (4th Quarter 2015)



Employment by Ownership (4th Quarter 2015)



Average Weekly Wage (4th Quarter 2015)

	Q4 2015	Q3 2015	Q4 2014	Change	
				Quarter	Year
WDA	\$831	\$775	\$811	\$56	\$20
Texas	\$1,099	\$999	\$1,070	\$100	\$29
US	\$1,082	\$974	\$1,036	\$108	\$46

Employment by Industry (4th Quarter 2015, Percent Change)

Industry	Employment	% of total	% Change	
			Quarter	Year
Natural resources and mining	11,573	6.4%	4.7%	-5.3%
Construction	8,567	4.7%	-1.6%	-4.2%
Manufacturing	6,421	3.5%	0.1%	-6.9%
Trade, transportation and utilities	39,859	22.0%	0.8%	-0.5%
Information	3,979	2.2%	-1.9%	-0.6%
Financial activities	8,925	4.9%	0.2%	2.0%
Professional and business services	13,303	7.3%	3.3%	1.8%
Education and health services	54,753	30.2%	4.0%	2.9%
Leisure and hospitality	20,660	11.4%	0.4%	3.4%
Other services	6,169	3.4%	-0.6%	2.4%
Public administration	7,280	4.0%	0.6%	1.8%
Total	181,489	100.0%	1.8%	0.6%

Employment by Industry (4th Quarter 2015)

