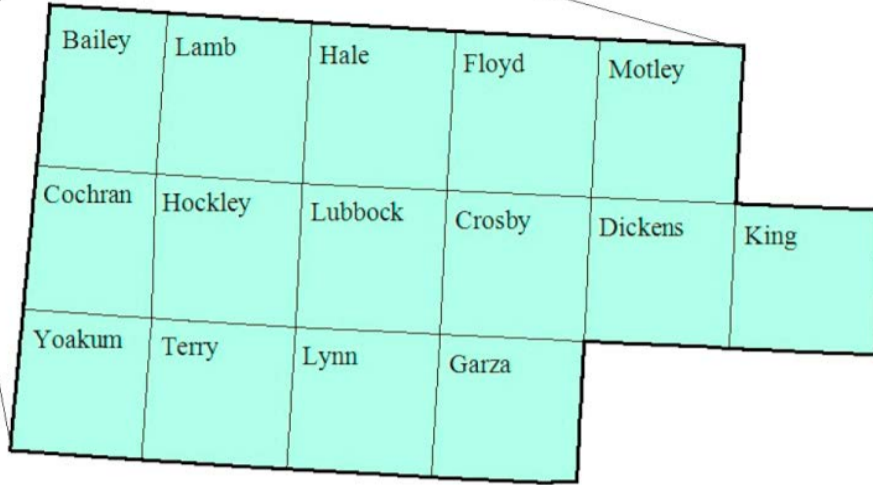


# South Plains Workforce Development Area

July 2016



### WDA Labor Force Statistics

	Jul-16	Jun-16	Jul-15	OTY
CLF	205,000	206,069	204,360	640
Employed	195,650	197,118	195,138	512
Unemployed	9,350	8,951	9,222	128
Rate	4.6%	4.3%	4.5%	0.1%

### Texas Labor Force Statistics

	Jul-16	Jun-16	Jul-15	OTY
CLF	13,386,738	13,338,466	13,120,456	266,282
Employed	12,706,976	12,694,041	12,487,238	219,738
Unemployed	679,762	644,425	633,218	46,544
Rate	5.1%	4.8%	4.8%	0.3%

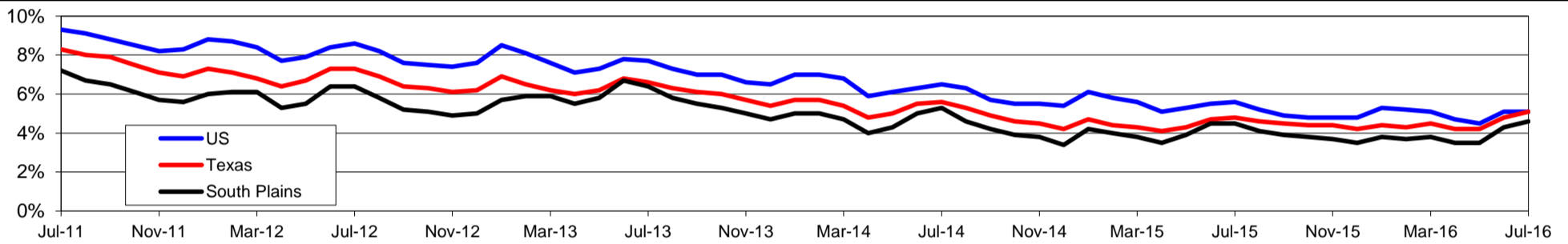
### US Labor Force Statistics

	Jul-16	Jun-16	Jul-15	OTY
CLF	160,705,000	160,135,000	158,527,000	2,178,000
Employed	152,437,000	151,990,000	149,722,000	2,715,000
Unemployed	8,267,000	8,144,000	8,805,000	-538,000
Rate	5.1%	5.1%	5.6%	-0.5%

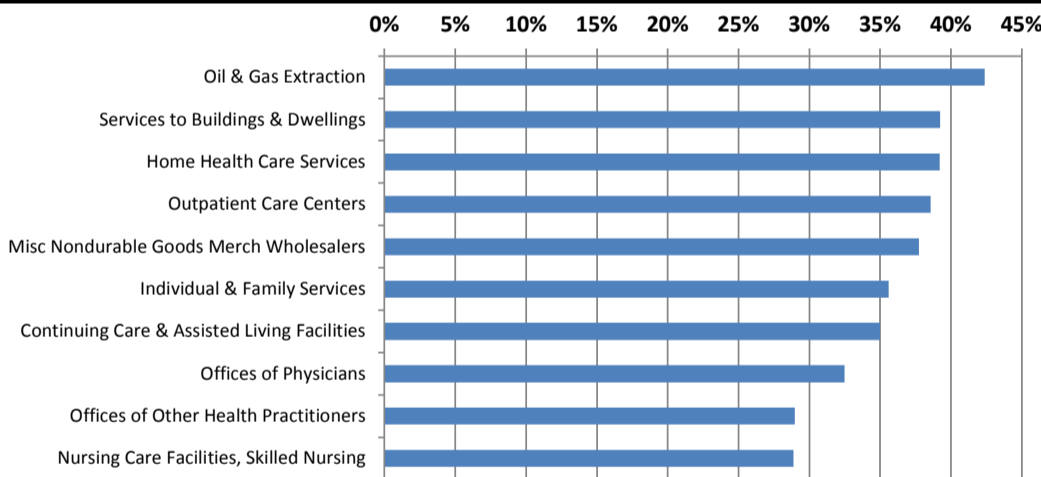
### Continued Claims for the Week of the 12th

	Jul-16	Jun-16	Jul-15	OTY
WDA	1,756	1,777	1,988	-232
Texas	156,380	157,420	148,988	7,392

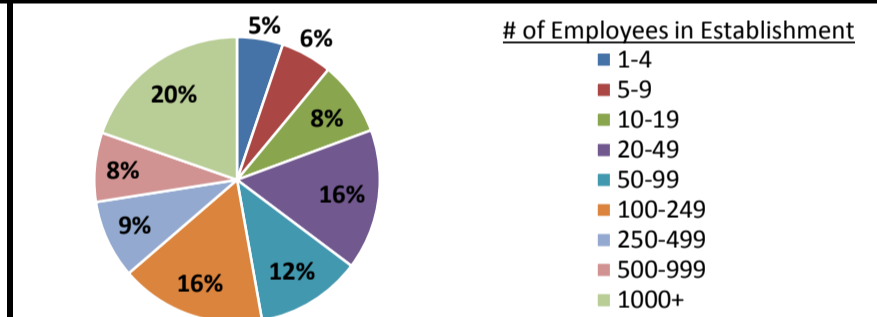
### Historical Unemployment Rates



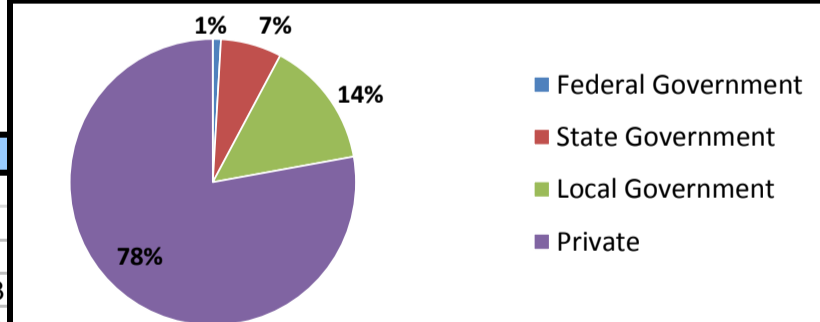
### Projected Fastest Growing Industries in WDA (% growth 2012-2022)



### Employment by Size Class (1st Quarter 2016)



### Employment by Ownership (1st Quarter 2016)



### Average Weekly Wage (1st Quarter 2016)

	Q1 2016	Q4 2015	Q1 2015	Change	
				Quarter	Year
WDA	\$757	\$832	\$768	-\$75	-\$11
Texas	\$1,066	\$1,099	\$1,089	-\$33	-\$23
US	N/A	\$1,082	\$1,048	N/A	N/A

### Employment by Industry (1st Quarter 2016, Percent Change)

Industry	Employment	% of total	% Change	
			Quarter	Year
Natural resources and mining	9,308	5.3%	-19.6%	-13.0%
Construction	8,350	4.7%	-2.5%	0.1%
Manufacturing	6,169	3.5%	-3.9%	-6.2%
Trade, transportation and utilities	39,163	22.2%	-1.7%	-0.2%
Information	3,904	2.2%	-1.9%	-2.7%
Financial activities	8,869	5.0%	-0.7%	1.2%
Professional and business services	12,992	7.4%	-2.4%	3.9%
Education and health services	54,584	30.9%	-0.3%	2.4%
Leisure and hospitality	20,296	11.5%	-1.5%	1.9%
Other services	5,803	3.3%	-6.1%	-2.9%
Public administration	7,260	4.1%	-0.3%	3.0%
<b>Total</b>	<b>176,698</b>	<b>100.0%</b>	<b>-2.6%</b>	<b>0.2%</b>

### Employment by Industry (1st Quarter 2016)

