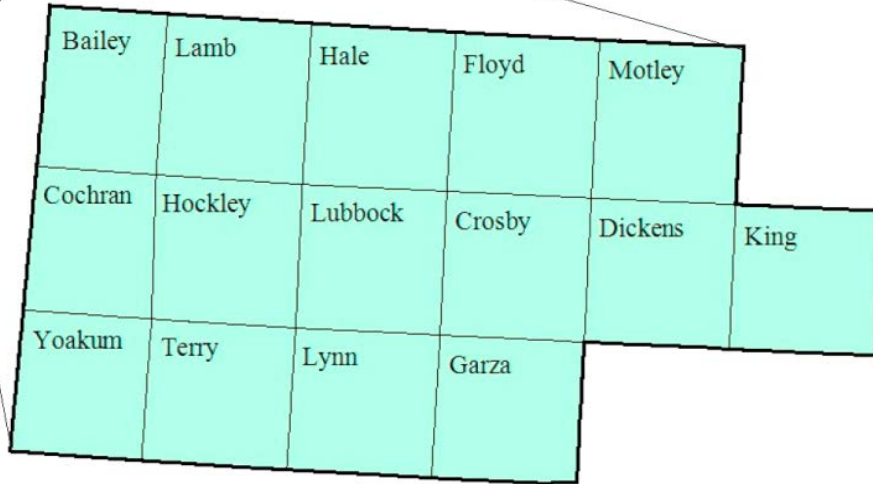


South Plains Workforce Development Area

January 2017



WDA Labor Force Statistics

	Jan-17	Dec-16	Jan-16	OTY
CLF	204,238	204,861	201,783	2,455
Employed	196,430	197,661	194,083	2,347
Unemployed	7,808	7,200	7,700	108
Rate	3.8%	3.5%	3.8%	0.0%

Texas Labor Force Statistics

	Jan-17	Dec-16	Jan-16	OTY
CLF	13,357,997	13,353,321	13,112,957	245,040
Employed	12,697,121	12,747,329	12,521,460	175,661
Unemployed	660,876	605,992	591,497	69,379
Rate	4.9%	4.5%	4.5%	0.4%

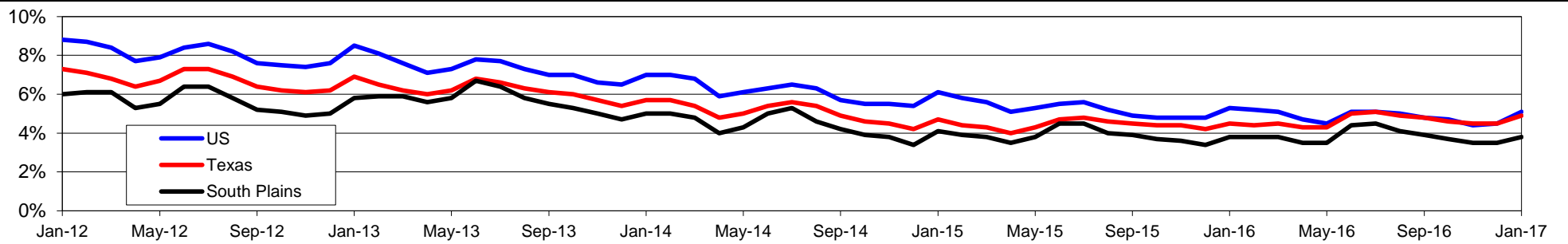
US Labor Force Statistics

	Jan-17	Dec-16	Jan-16	OTY
CLF	158,676,000	158,968,000	157,347,000	1,329,000
Employed	150,527,000	151,798,000	149,037,000	1,490,000
Unemployed	8,149,000	7,170,000	8,309,000	-160,000
Rate	5.1%	4.5%	5.3%	-0.2%

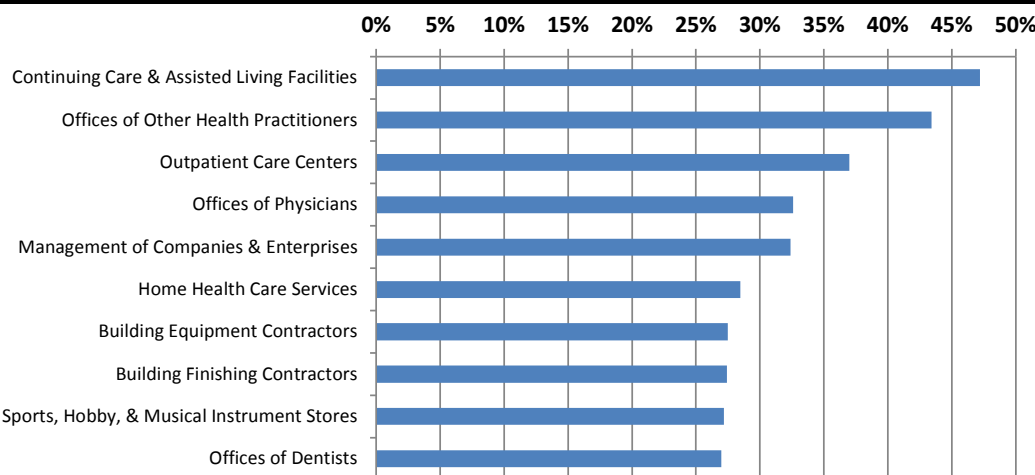
Continued Claims for the Week of the 12th

	Jan-17	Dec-16	Jan-16	OTY
WDA	979	906	1,347	-368
Texas	131,825	129,904	143,155	-11,330

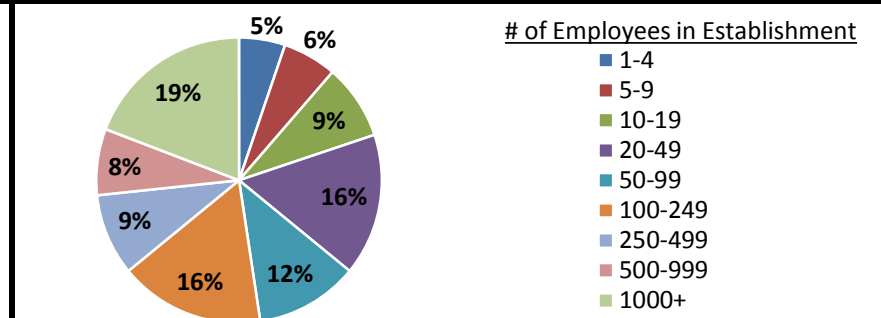
Historical Unemployment Rates



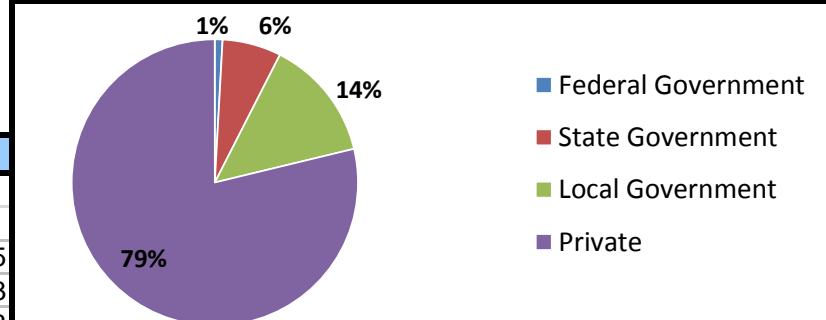
Projected Fastest Growing Industries in WDA (% growth 2014-2024)



Employment by Size Class (3rd Quarter 2016)



Employment by Ownership (3rd Quarter 2016)



Average Weekly Wage (3rd Quarter 2016)

	Q3 2016	Q2 2016	Q3 2015	Change	
				Quarter	Year
WDA	\$800	\$755	\$775	\$45	\$25
Texas	\$1,042	\$1,000	\$999	\$42	\$43
US	\$1,027	\$988	\$974	\$39	\$53

Employment by Industry (3rd Quarter 2016, Percent Change)

Industry	Employment	% of total	% Change	
			Quarter	Year
Natural resources and mining	10,386	5.8%	6.0%	-6.0%
Construction	8,936	5.0%	1.3%	2.7%
Manufacturing	6,203	3.5%	0.4%	-3.3%
Trade, transportation and utilities	39,449	22.0%	-0.1%	-0.3%
Information	3,899	2.2%	-0.3%	-3.9%
Financial activities	8,906	5.0%	0.0%	0.0%
Professional and business services	13,992	7.8%	5.1%	8.7%
Education and health services	52,976	29.5%	-3.6%	0.6%
Leisure and hospitality	21,372	11.9%	-0.8%	3.9%
Other services	6,060	3.4%	-1.4%	-2.3%
Public administration	7,432	4.1%	1.6%	2.7%
Total	179,611	100.0%	-0.4%	0.8%

Employment by Industry (3rd Quarter 2016)

