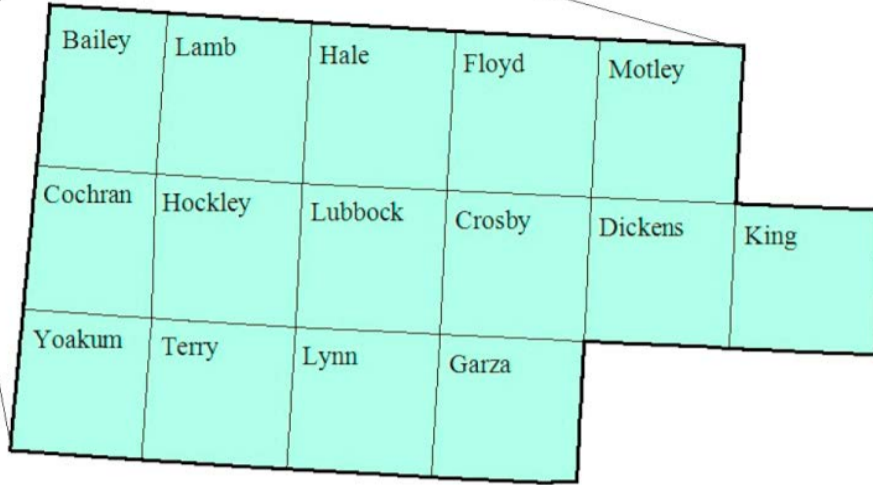


South Plains Workforce Development Area

February 2017



WDA Labor Force Statistics

	Feb-17	Jan-17	Feb-16	OTY
CLF	207,542	204,006	205,876	1,666
Employed	198,971	196,200	198,104	867
Unemployed	8,571	7,806	7,772	799
Rate	4.1%	3.8%	3.8%	0.3%

Texas Labor Force Statistics

	Feb-17	Jan-17	Feb-16	OTY
CLF	13,466,399	13,356,586	13,185,966	280,433
Employed	12,777,968	12,695,730	12,604,648	173,320
Unemployed	688,431	660,856	581,318	107,113
Rate	5.1%	4.9%	4.4%	0.7%

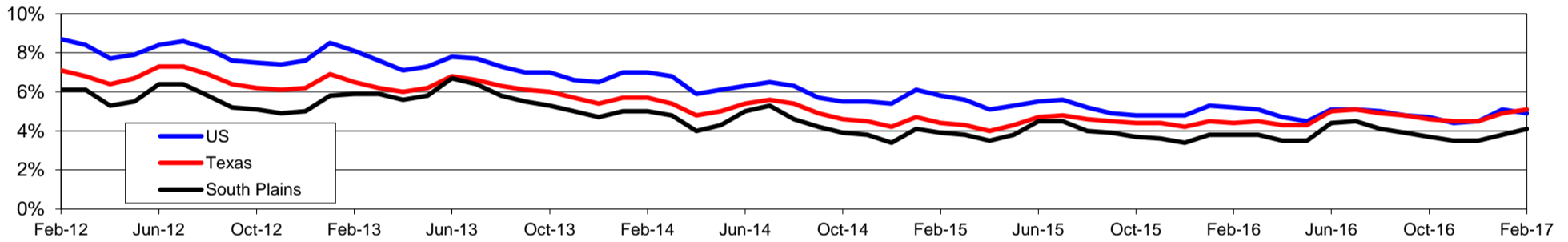
US Labor Force Statistics

	Feb-17	Jan-17	Feb-16	OTY
CLF	159,482,000	158,676,000	158,279,000	1,203,000
Employed	151,594,000	150,527,000	150,060,000	1,534,000
Unemployed	7,887,000	8,149,000	8,219,000	-332,000
Rate	4.9%	5.1%	5.2%	-0.3%

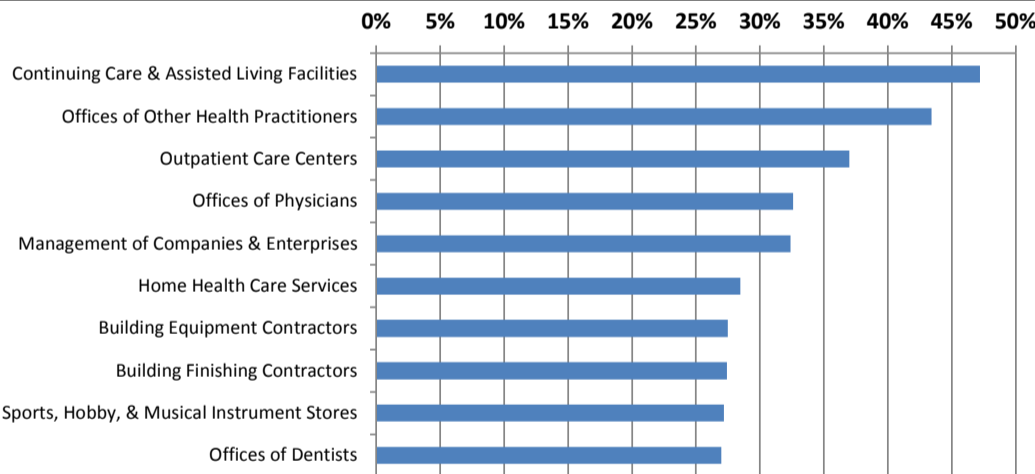
Continued Claims for the Week of the 12th

	Feb-17	Jan-17	Feb-16	OTY
WDA	1,095	981	1,505	-410
Texas	122,950	132,086	145,342	-22,392

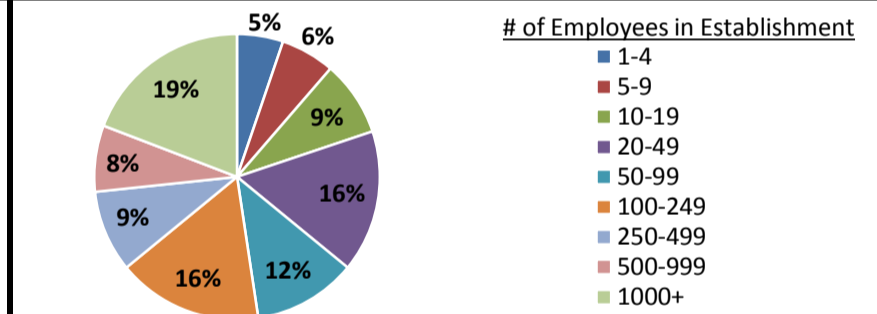
Historical Unemployment Rates



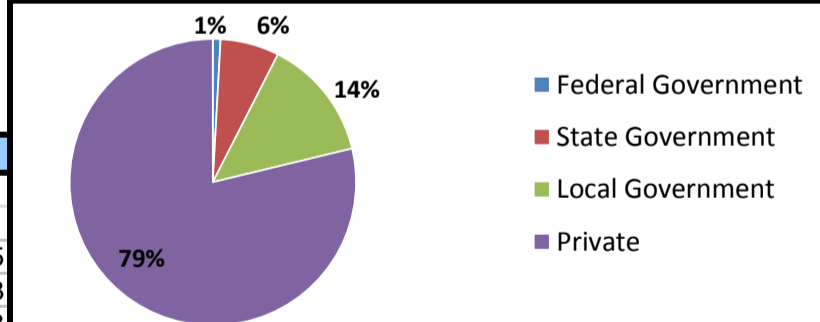
Projected Fastest Growing Industries in WDA (% growth 2014-2024)



Employment by Size Class (3rd Quarter 2016)



Employment by Ownership (3rd Quarter 2016)



Average Weekly Wage (3rd Quarter 2016)

	Q3 2016	Q2 2016	Q3 2015	Change	
				Quarter	Year
WDA	\$800	\$755	\$775	\$45	\$25
Texas	\$1,042	\$1,000	\$999	\$42	\$43
US	\$1,027	\$988	\$974	\$39	\$53

Employment by Industry (3rd Quarter 2016, Percent Change)

Industry	Employment	% of total	% Change	
			Quarter	Year
Natural resources and mining	10,386	5.8%	6.0%	-6.0%
Construction	8,936	5.0%	1.3%	2.7%
Manufacturing	6,203	3.5%	0.4%	-3.3%
Trade, transportation and utilities	39,449	22.0%	-0.1%	-0.3%
Information	3,899	2.2%	-0.3%	-3.9%
Financial activities	8,906	5.0%	0.0%	0.0%
Professional and business services	13,992	7.8%	5.1%	8.7%
Education and health services	52,976	29.5%	-3.6%	0.6%
Leisure and hospitality	21,372	11.9%	-0.8%	3.9%
Other services	6,060	3.4%	-1.4%	-2.3%
Public administration	7,432	4.1%	1.6%	2.7%
Total	179,611	100.0%	-0.4%	0.8%

Employment by Industry (3rd Quarter 2016)

