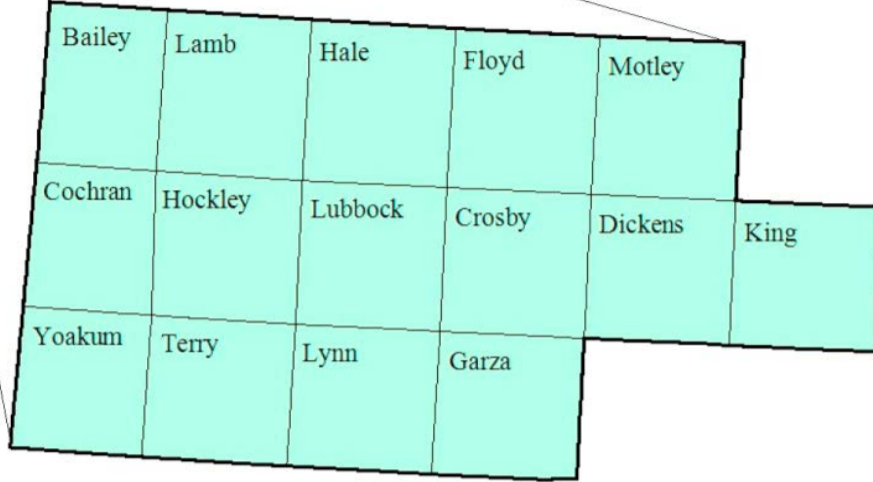


# South Plains Workforce Development Area

## December 2016



### WDA Labor Force Statistics

	Dec-16	Nov-16	Dec-15	OTY
CLF	202,693	203,392	202,863	-170
Employed	195,426	196,516	195,835	-409
Unemployed	7,267	6,876	7,028	239
Rate	3.6%	3.4%	3.5%	0.1%

### Texas Labor Force Statistics

	Dec-16	Nov-16	Dec-15	OTY
CLF	13,398,817	13,390,507	13,136,901	261,916
Employed	12,788,890	12,823,827	12,580,195	208,695
Unemployed	609,927	566,680	556,706	53,221
Rate	4.6%	4.2%	4.2%	0.4%

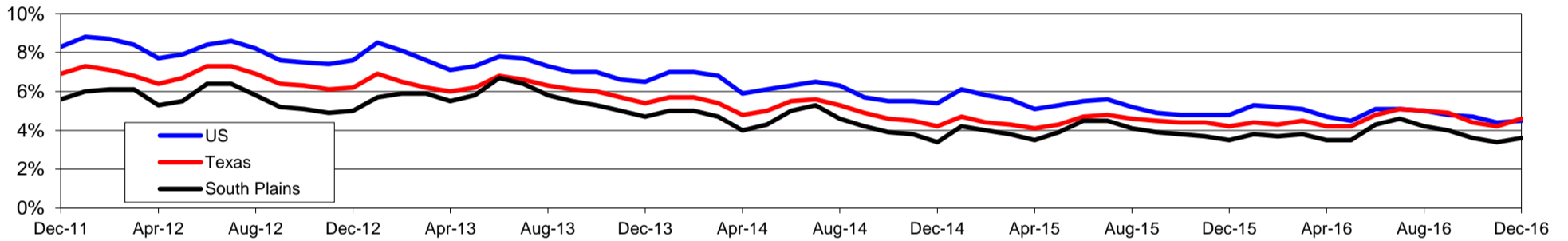
### US Labor Force Statistics

	Dec-16	Nov-16	Dec-15	OTY
CLF	158,968,000	159,451,000	157,245,000	1,723,000
Employed	151,798,000	152,385,000	149,703,000	2,095,000
Unemployed	7,170,000	7,066,000	7,542,000	-372,000
Rate	4.5%	4.4%	4.8%	-0.3%

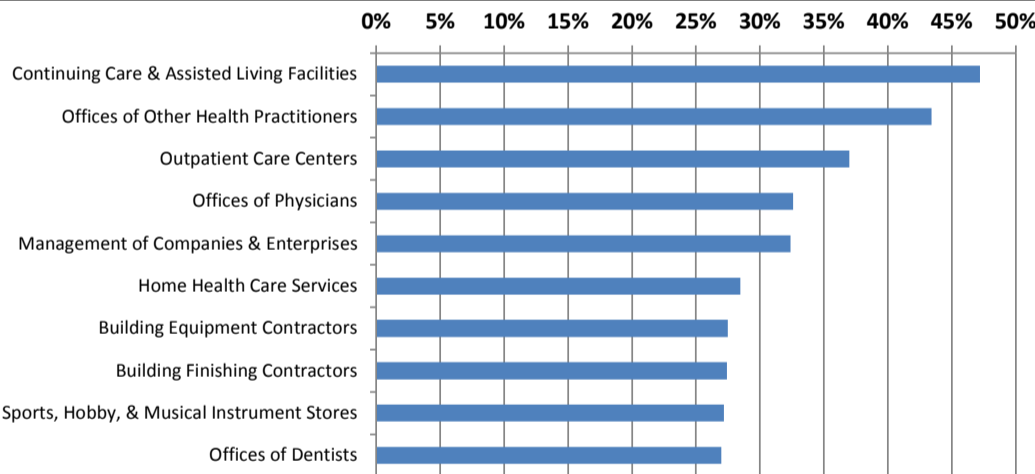
### Continued Claims for the Week of the 12th

	Dec-16	Nov-16	Dec-15	OTY
WDA	903	904	1,187	-284
Texas	129,904	126,982	138,530	-8,626

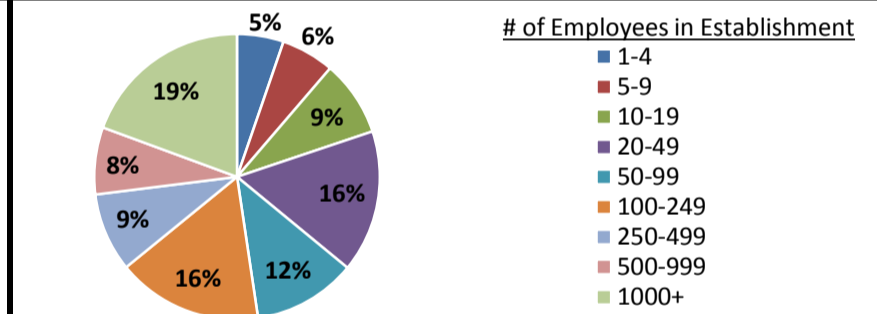
### Historical Unemployment Rates



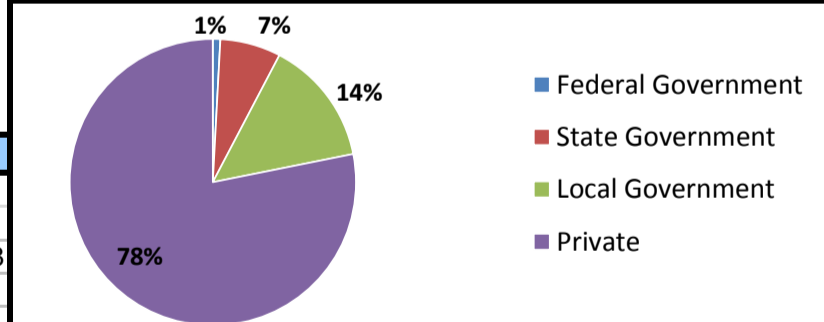
### Projected Fastest Growing Industries in WDA (% growth 2014-2024)



### Employment by Size Class (2nd Quarter 2016)



### Employment by Ownership (2nd Quarter 2016)



### Average Weekly Wage (2nd Quarter 2016)

	Q2 2016	Q1 2016	Q2 2015	Change	
				Quarter	Year
WDA	\$756	\$754	\$748	\$2	\$8
Texas	\$1,000	\$1,063	\$989	-\$63	\$11
US	\$989	\$1,042	\$968	-\$53	\$21

### Employment by Industry (2nd Quarter 2016, Percent Change)

Industry	Employment	% of total	% Change	
			Quarter	Year
Natural resources and mining	9,797	5.4%	3.6%	-5.6%
Construction	8,772	4.9%	3.3%	1.8%
Manufacturing	6,180	3.4%	-0.2%	-3.6%
Trade, transportation and utilities	39,421	21.9%	0.4%	0.0%
Information	3,910	2.2%	0.2%	-4.1%
Financial activities	8,915	4.9%	0.6%	1.4%
Professional and business services	13,272	7.4%	1.1%	3.1%
Education and health services	55,080	30.5%	0.7%	3.5%
Leisure and hospitality	21,485	11.9%	4.8%	4.9%
Other services	6,160	3.4%	3.6%	-1.4%
Public administration	7,315	4.1%	0.3%	2.8%
<b>Total</b>	<b>180,307</b>	<b>100.0%</b>	<b>1.5%</b>	<b>1.5%</b>

### Employment by Industry (2nd Quarter 2016)

