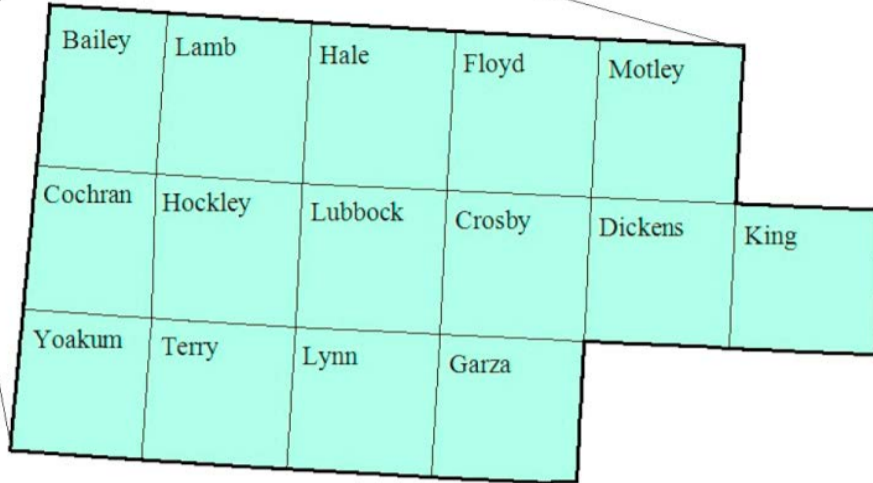


# South Plains Workforce Development Area

## August 2016



### WDA Labor Force Statistics

	Aug-16	Jul-16	Aug-15	OTY
CLF	205,186	204,585	202,533	2,653
Employed	196,568	195,249	194,298	2,270
Unemployed	8,618	9,336	8,235	383
Rate	4.2%	4.6%	4.1%	0.1%

### Texas Labor Force Statistics

	Aug-16	Jul-16	Aug-15	OTY
CLF	13,378,918	13,386,057	13,047,642	331,276
Employed	12,709,695	12,706,620	12,447,603	262,092
Unemployed	669,223	679,437	600,039	69,184
Rate	5.0%	5.1%	4.6%	0.4%

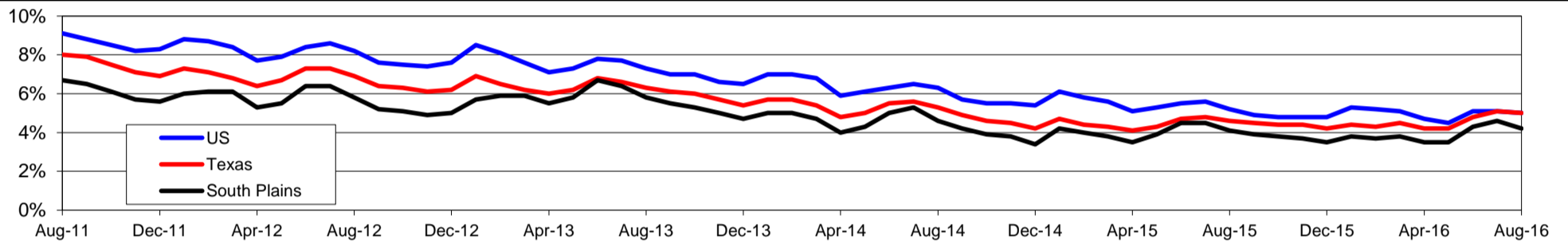
### US Labor Force Statistics

	Aug-16	Jul-16	Aug-15	OTY
CLF	159,800,000	160,705,000	157,390,000	2,410,000
Employed	151,804,000	152,437,000	149,228,000	2,576,000
Unemployed	7,996,000	8,267,000	8,162,000	-166,000
Rate	5.0%	5.1%	5.2%	-0.2%

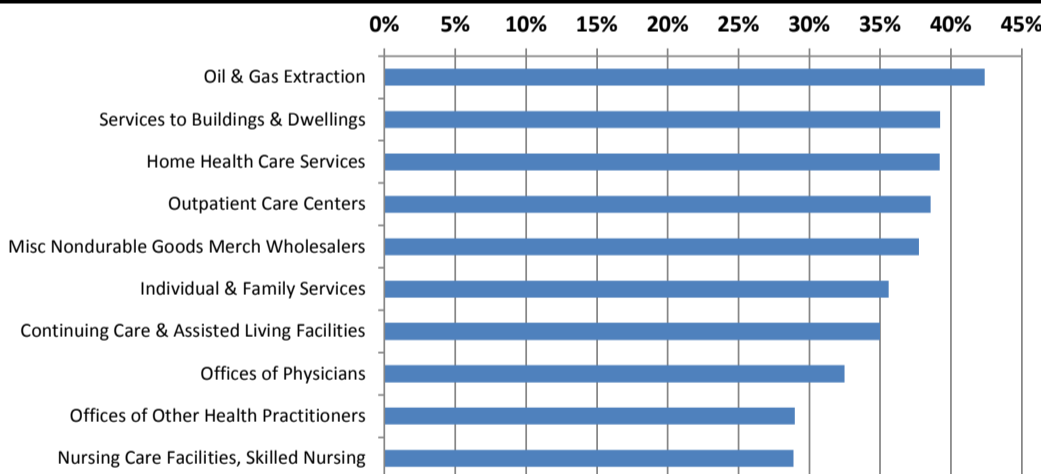
### Continued Claims for the Week of the 12th

	Aug-16	Jul-16	Aug-15	OTY
WDA	1,256	1,765	1,621	-365
Texas	147,686	157,732	144,204	3,482

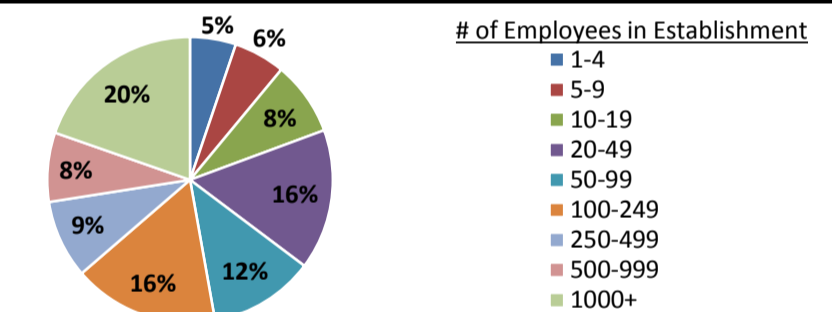
### Historical Unemployment Rates



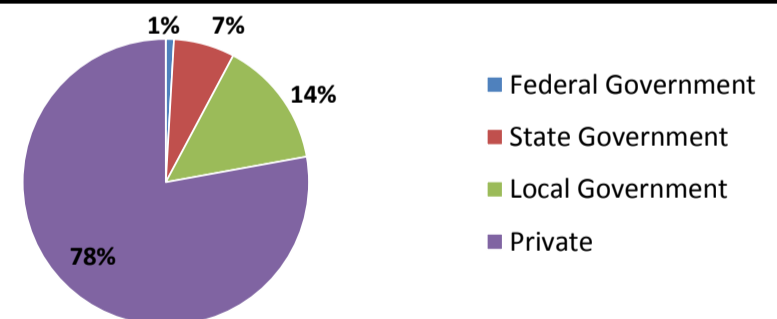
### Projected Fastest Growing Industries in WDA (% growth 2012-2022)



### Employment by Size Class (1st Quarter 2016)



### Employment by Ownership (1st Quarter 2016)



### Average Weekly Wage (1st Quarter 2016)

	Q1 2016	Q4 2015	Q1 2015	Change	
				Quarter	Year
WDA	\$757	\$832	\$768	-\$75	-\$11
Texas	\$1,066	\$1,099	\$1,089	-\$33	-\$23
US	\$1,043	\$1,083	\$1,048	-\$40	-\$5

### Employment by Industry (1st Quarter 2016, Percent Change)

Industry	Employment	% of total	% Change	
			Quarter	Year
Natural resources and mining	9,308	5.3%	-19.6%	-13.0%
Construction	8,350	4.7%	-2.5%	0.1%
Manufacturing	6,169	3.5%	-3.9%	-6.2%
Trade, transportation and utilities	39,163	22.2%	-1.7%	-0.2%
Information	3,904	2.2%	-1.9%	-2.7%
Financial activities	8,869	5.0%	-0.7%	1.2%
Professional and business services	12,992	7.4%	-2.4%	3.9%
Education and health services	54,584	30.9%	-0.3%	2.4%
Leisure and hospitality	20,296	11.5%	-1.5%	1.9%
Other services	5,803	3.3%	-6.1%	-2.9%
Public administration	7,260	4.1%	-0.3%	3.0%
<b>Total</b>	<b>176,698</b>	<b>100.0%</b>	<b>-2.6%</b>	<b>0.2%</b>

### Employment by Industry (1st Quarter 2016)

