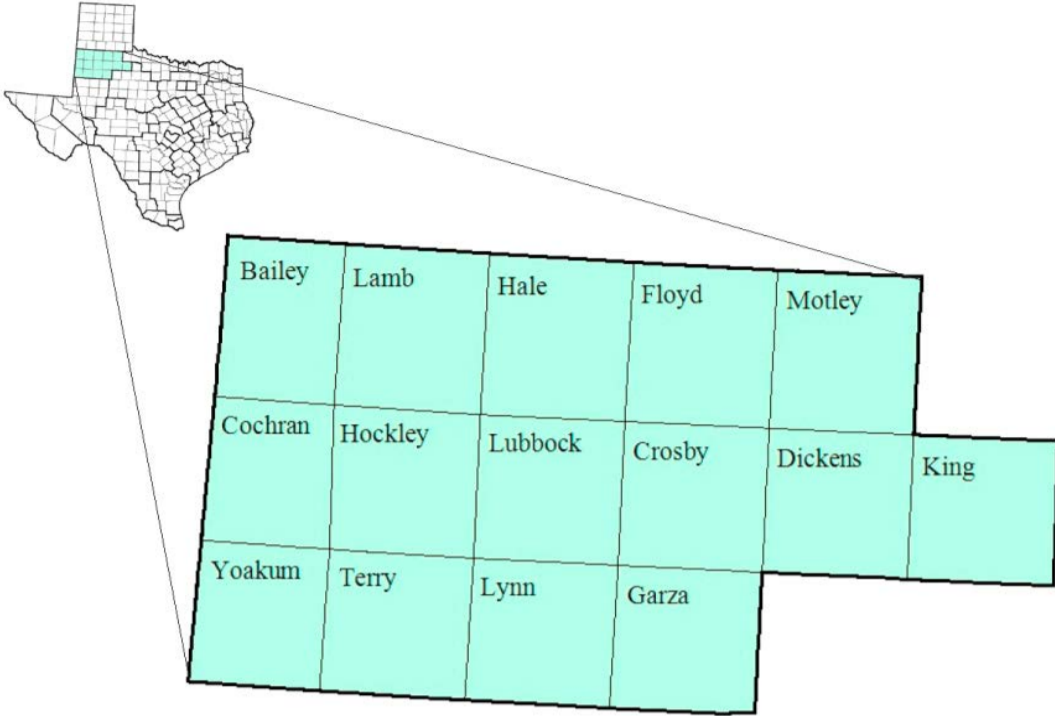


South Plains Workforce Development Area

April 2017



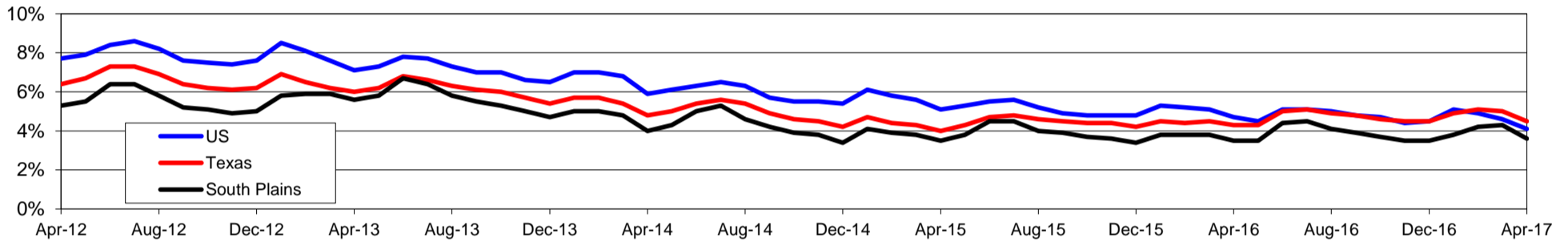
WDA Labor Force Statistics				
	Apr-17	Mar-17	Apr-16	OTY
CLF	207,754	209,891	207,617	137
Employed	200,259	200,773	200,404	-145
Unemployed	7,495	9,118	7,213	282
Rate	3.6%	4.3%	3.5%	0.1%

Texas Labor Force Statistics				
	Apr-17	Mar-17	Apr-16	OTY
CLF	13,506,742	13,514,563	13,236,855	269,887
Employed	12,895,003	12,838,948	12,672,854	222,149
Unemployed	611,739	675,615	564,001	47,738
Rate	4.5%	5.0%	4.3%	0.2%

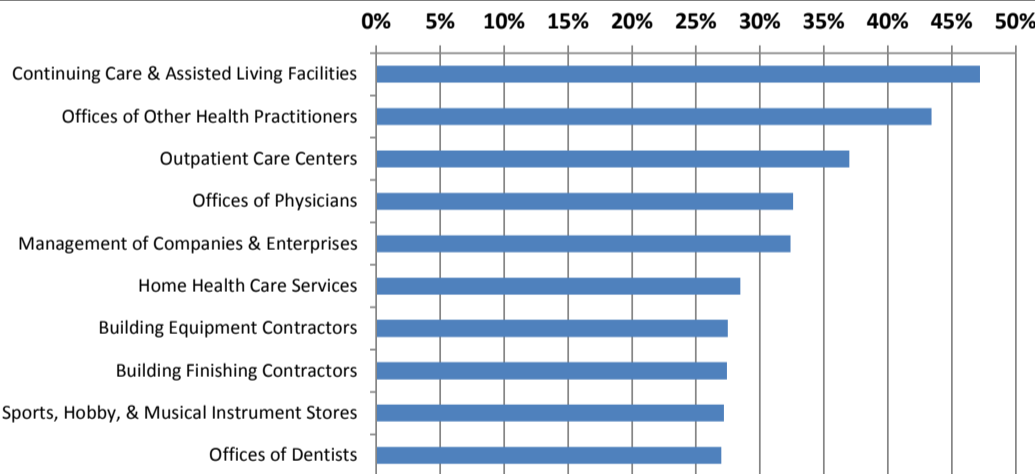
US Labor Force Statistics				
	Apr-17	Mar-17	Apr-16	OTY
CLF	159,817,000	159,912,000	158,488,000	1,329,000
Employed	153,262,000	152,628,000	151,075,000	2,187,000
Unemployed	6,555,000	7,284,000	7,413,000	-858,000
Rate	4.1%	4.6%	4.7%	-0.6%

Continued Claims for the Week of the 12th				
	Apr-17	Mar-17	Apr-16	OTY
WDA	1,108	1,575	1,419	-311
Texas	122,950	132,086	145,342	-22,392

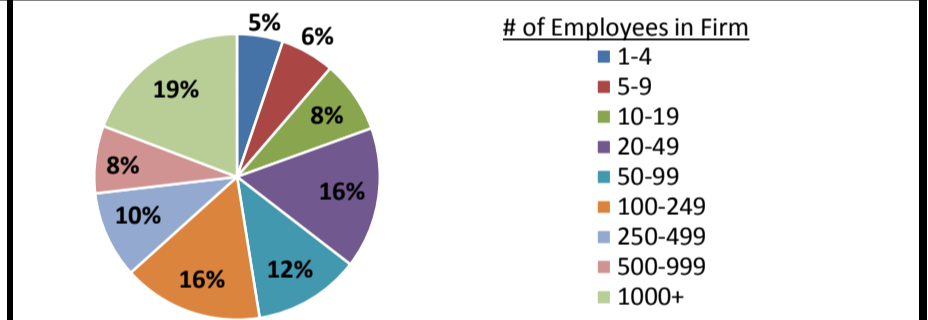
Historical Unemployment Rates



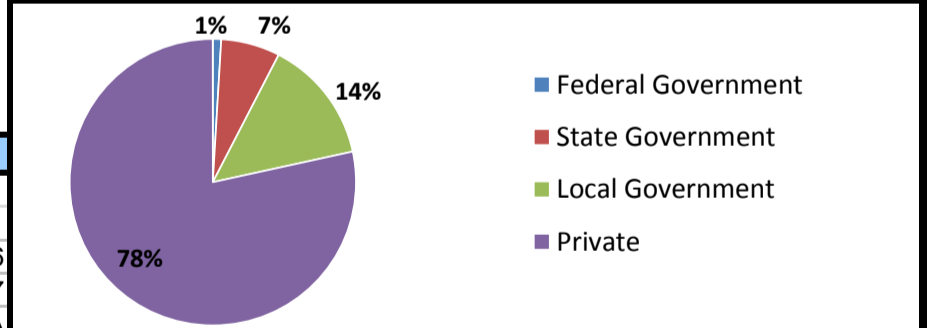
Projected Fastest Growing Industries in WDA (% growth 2014-2024)



Employment by Size Class (4th Quarter 2016)



Employment by Ownership (4th Quarter 2016)



Average Weekly Wage (4th Quarter 2016)

	Q4 2016	Q3 2016	Q4 2015	Change	
				Quarter	Year
WDA	\$826	\$800	\$832	\$26	-\$6
Texas	\$1,072	\$1,042	\$1,099	\$31	-\$27
US	N/A	\$1,027	\$1,083	N/A	N/A

Employment by Industry (4th Quarter 2016, Percent Change)

Industry	Employment	% of total	% Change	
			Quarter	Year
Natural resources and mining	11,691	6.3%	12.2%	1.0%
Construction	8,837	4.8%	-1.5%	3.2%
Manufacturing	6,209	3.4%	0.1%	-3.3%
Trade, transportation and utilities	40,379	21.9%	2.3%	1.4%
Information	3,774	2.0%	-3.2%	-5.2%
Financial activities	8,949	4.9%	0.4%	0.2%
Professional and business services	13,802	7.5%	2.2%	3.7%
Education and health services	55,451	30.1%	3.7%	1.3%
Leisure and hospitality	21,601	11.7%	1.1%	4.8%
Other services	5,976	3.2%	-1.3%	-3.3%
Public administration	7,508	4.1%	0.9%	3.1%
Total	184,177	100.0%	2.5%	1.5%

Employment by Industry (4th Quarter 2016)

