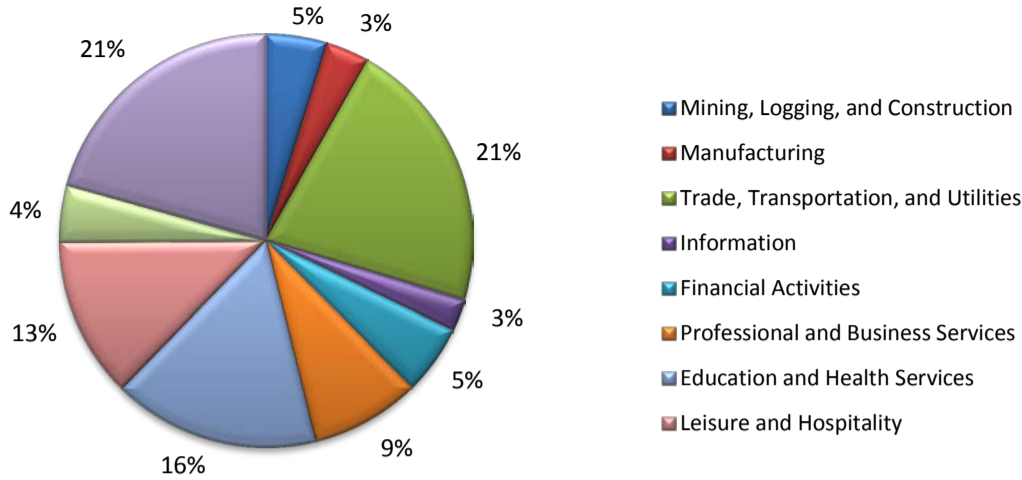
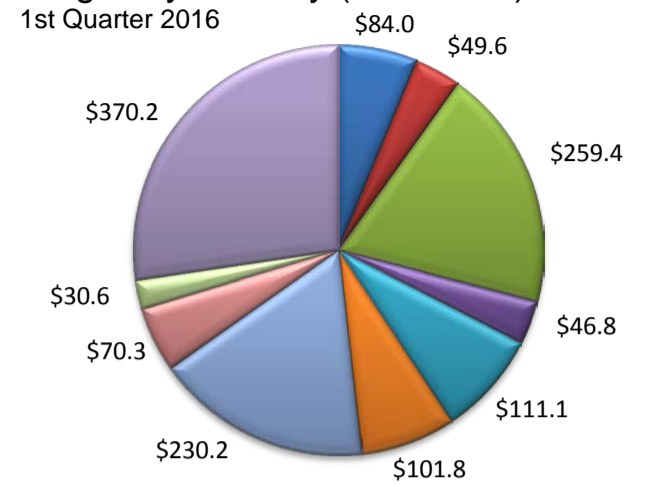


(Crosby, Lubbock, Lynn)

Industry Composition



Wages by Industry (in millions)



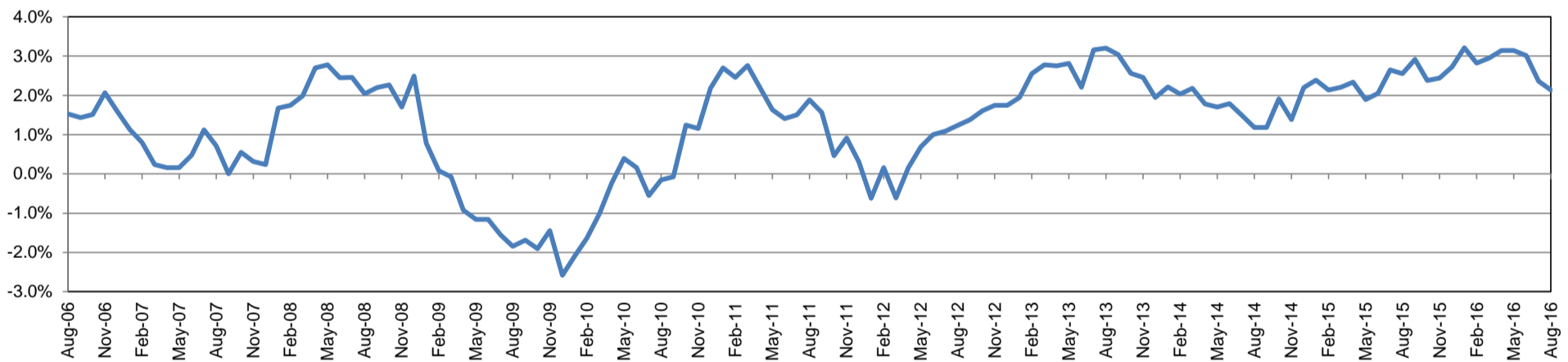
Employment by Industry

	Aug-16	Jul-16	Aug-15	Monthly Change		Annual Change	
				Actual	%	Actual	%
Total Nonfarm	143,500	142,900	140,500	600	0.4%	3,000	2.1%
Mining, Logging, and Construction	6,800	6,900	6,900	-100	-1.5%	-100	-1.5%
Manufacturing	4,900	4,900	5,000	0	0.0%	-100	-2.0%
Trade, Transportation, and Utilities	30,800	30,900	30,400	-100	-0.3%	400	1.3%
Information	3,600	3,700	3,800	-100	-2.7%	-200	-5.3%
Financial Activities	7,800	7,800	7,800	0	0.0%	0	0.0%
Professional and Business Services	12,300	12,000	11,300	300	2.5%	1,000	8.9%
Education and Health Services	23,200	23,100	22,500	100	0.4%	700	3.1%
Leisure and Hospitality	18,100	17,800	17,700	300	1.7%	400	2.3%
Other Services	6,300	6,100	6,000	200	3.3%	300	5.0%
Government	29,700	29,700	29,100	0	0.0%	600	2.1%

Industry Size Class

Size Class	Employees per firm	Number of Firms	March 2016		
			Employment in Size Class	% Total Employment	
9	1000+	9	30,144	21.9%	
8	500-999	13	8,665	6.3%	
7	250-499	33	11,630	8.4%	
6	100-249	162	23,797	17.3%	
5	50-99	231	16,080	11.7%	
4	20-49	725	22,372	16.2%	
3	10-19	872	11,795	8.6%	
2	5-9	1,134	7,523	5.5%	
1	1-4	2,945	5,937	4.3%	
0	0	575	0	0.0%	
Total			6,699	137,943	100.0%

Annual Growth Rate for Total Nonagricultural Employment



Unemployment Information (all estimates in thousands)

	Lubbock MSA				Texas (Actual)				United States (Actual)			
	C.L.F.	Emp.	Unemp.	Rate	C.L.F.	Emp.	Unemp.	Rate	C.L.F.	Emp.	Unemp.	Rate
Aug-16	157.5	151.6	5.9	3.8	13,378.9	12,709.7	669.2	5.0	159,800.0	151,804.0	7,996.0	5.0
Jul-16	157.4	150.9	6.5	4.1	13,386.1	12,706.6	679.4	5.1	160,705.0	152,437.0	8,267.0	5.1
Aug-15	153.5	148.0	5.5	3.6	13,047.6	12,447.6	600.0	4.6	157,390.0	149,228.0	8,162.0	5.2

Historical Unemployment Rates

