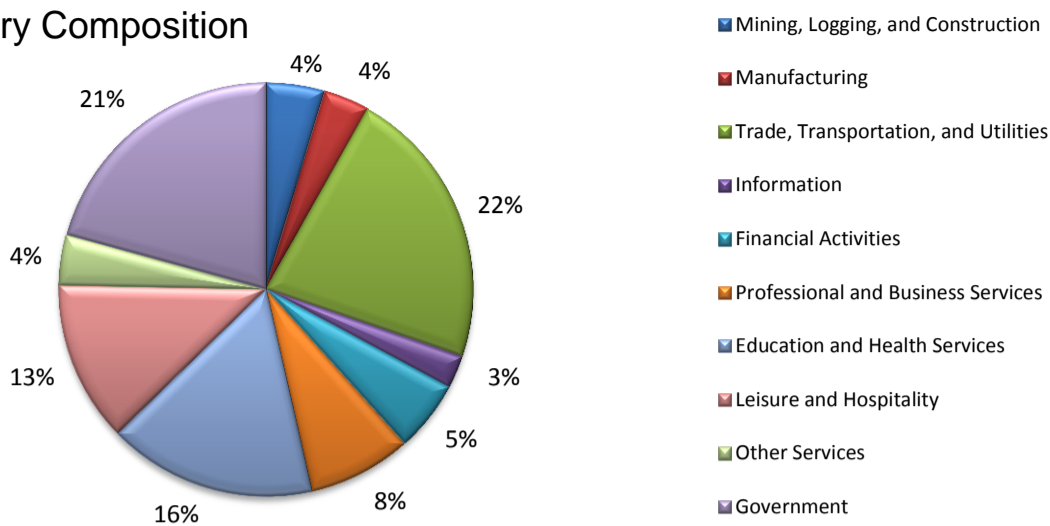
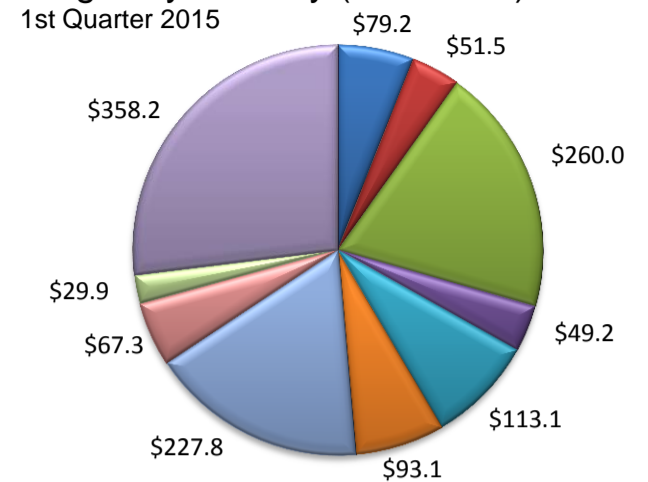


(Crosby, Lubbock, Lynn)

Industry Composition



Wages by Industry (in millions)



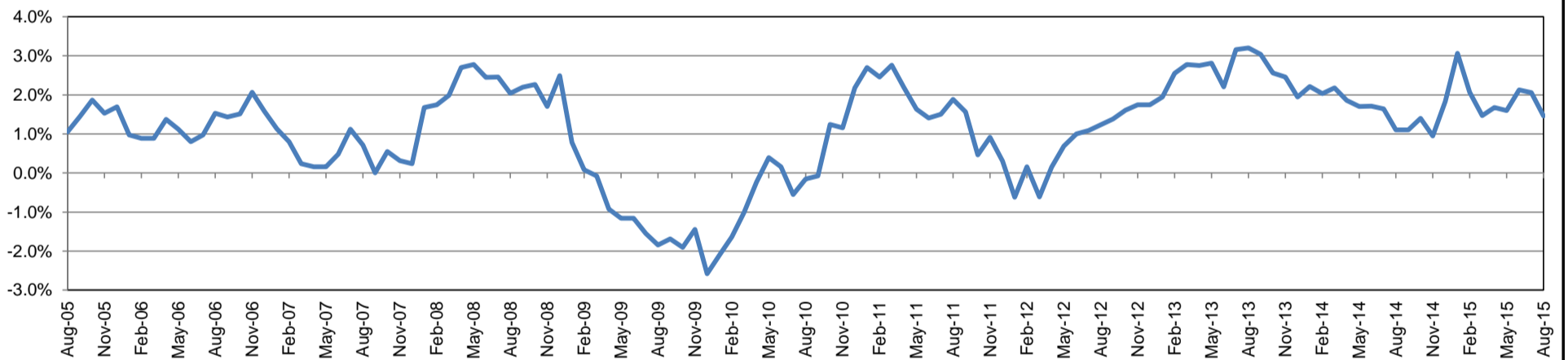
Employment by Industry

	Aug-15	Jul-15	Aug-14	Monthly Change		Annual Change	
				Actual	%	Actual	%
Total Nonfarm	138,900	139,000	136,900	-100	-0.1%	2,000	1.5%
Mining, Logging, and Construction	6,300	6,500	6,600	-200	-3.1%	-300	-4.6%
Manufacturing	5,000	5,000	5,000	0	0.0%	0	0.0%
Trade, Transportation, and Utilities	30,700	30,800	29,400	-100	-0.3%	1,300	4.4%
Information	3,600	3,700	3,800	-100	-2.7%	-200	-5.3%
Financial Activities	7,700	7,700	7,700	0	0.0%	0	0.0%
Professional and Business Services	11,200	11,000	11,300	200	1.8%	-100	-0.9%
Education and Health Services	22,600	22,500	21,700	100	0.4%	900	4.2%
Leisure and Hospitality	17,500	17,600	17,300	-100	-0.6%	200	1.2%
Other Services	5,500	5,500	5,700	0	0.0%	-200	-3.5%
Government	28,800	28,700	28,400	100	0.4%	400	1.4%

Industry Size Class

Size Class	Employees per firm	Number of Firms	March 2015		
			Employment in Size Class	% Total Employment	
9	1000+	9	29,253	21.6%	
8	500-999	13	8,381	6.2%	
7	250-499	29	10,258	7.6%	
6	100-249	170	24,707	18.2%	
5	50-99	217	14,773	10.9%	
4	20-49	729	22,381	16.5%	
3	10-19	860	11,819	8.7%	
2	5-9	1,199	7,915	5.8%	
1	1-4	2,998	5,975	4.4%	
0	0	575	0	0.0%	
Total			6,799	135,462	100.0%

Annual Growth Rate for Total Nonagricultural Employment



Unemployment Information (all estimates in thousands)

	Lubbock MSA				Texas (Actual)				United States (Actual)			
	C.L.F.	Emp.	Unemp.	Rate	C.L.F.	Emp.	Unemp.	Rate	C.L.F.	Emp.	Unemp.	Rate
Aug-15	151.8	146.6	5.2	3.4	13,029.5	12,459.7	569.8	4.4	157,390.0	149,228.0	8,162.0	5.2
Jul-15	153.2	147.3	5.9	3.8	13,082.1	12,485.0	597.1	4.6	158,527.0	149,722.0	8,805.0	5.6
Aug-14	153.8	147.4	6.4	4.2	13,093.4	12,399.7	693.7	5.3	156,434.0	146,647.0	9,787.0	6.3

Historical Unemployment Rates

