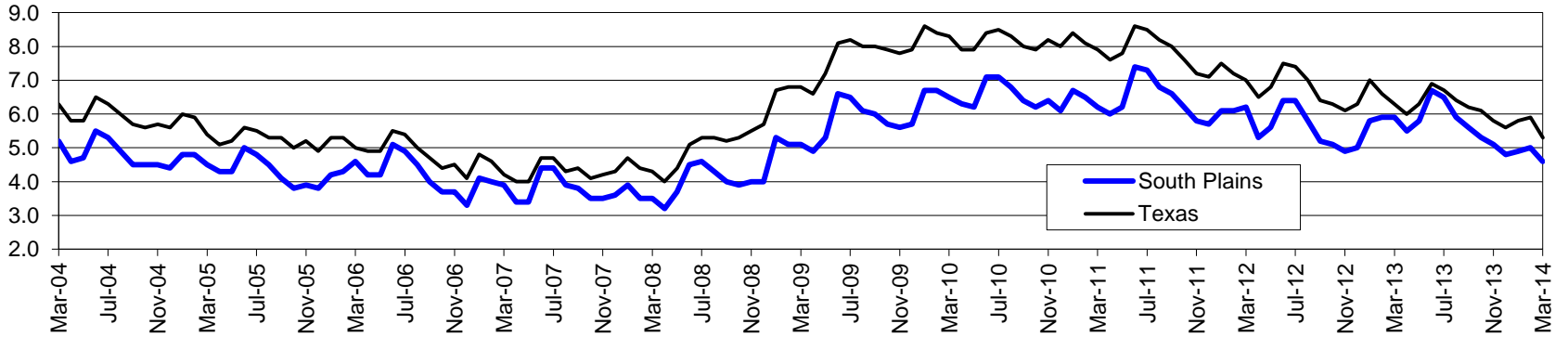


# South Plains Workforce Development Area\*

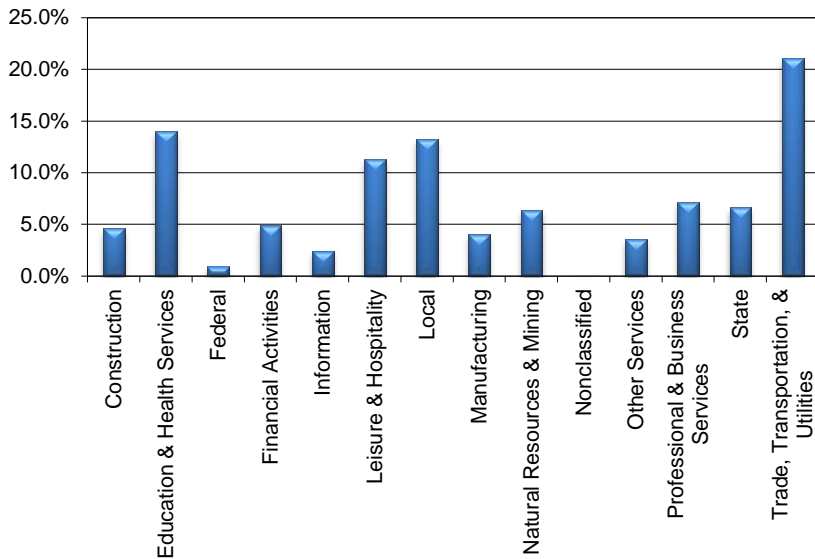
March 2014

South Plains WDA					Texas				
	CLF	Employed	Unemployed	Rate		CLF	Employed	Unemployed	Rate
Mar-14	211,040	201,349	9,691	4.6	Mar-14	12,955,590	12,263,096	692,494	5.3
Feb-14	211,461	200,836	10,625	5.0	Feb-14	12,906,314	12,150,460	755,854	5.9
Mar-13	208,034	195,694	12,340	5.9	Mar-13	12,723,227	11,917,373	805,854	6.3

## Historical Unemployment Rates



## South Plains WDA Industry Composition 3rd Quarter 2013



## Total WDA Claims

### Continued Claims for the Week of the 12th

	Mar-14	Feb-14	Mar-13	OTY
Continued	1,247	1,187	2,499	-1,252

### Texas Unemployment Insurance Claims

#### Continued Claims for the Week of the 12th

	Mar-14	Feb-14	Mar-13	OTY
Continued	129,200	130,397	129,222	-22

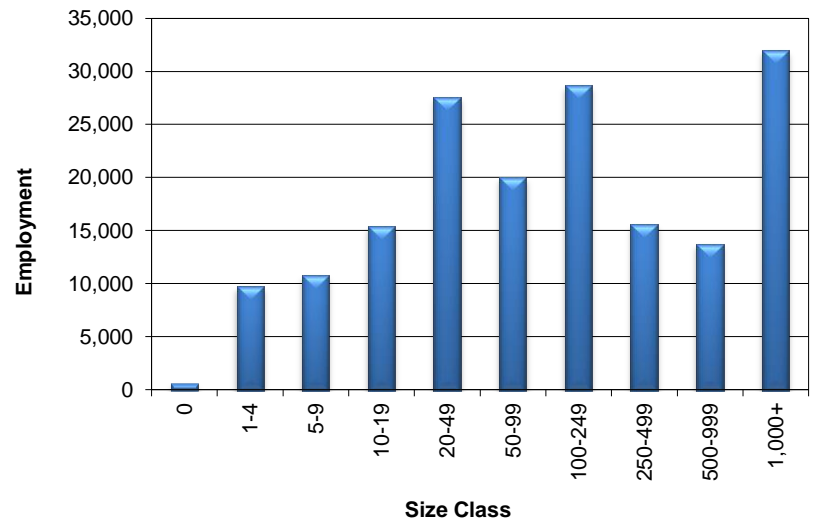
## South Plains WDA Average Weekly Wage

	South Plains	Texas
3rd Quarter 2013	\$736.97	\$952.05
2nd Quarter 2013	\$709.71	\$943.59
3rd Quarter 2012	\$718.60	\$929.04
Quarter Change	\$27.26	\$8.46
OTY Change	\$18.37	\$23.01

## NAICS Covered Employment Quarterly Data 3rd Quarter 2013

SUPER SECTOR	Employment	Change	
		Quarter	Year
Construction	8,012	114	556
Education & Health Services	24,346	-1	485
Federal	1,553	-36	-103
Financial Activities	8,418	198	234
Information	4,195	26	140
Leisure & Hospitality	19,704	-197	857
Local	23,023	-538	-6
Manufacturing	6,962	51	-2,497
Natural Resources & Mining	11,061	1,097	458
Nonclassified	57	6	18
Other Services	6,066	27	32
Professional & Business Services	12,454	23	42
State	11,445	-577	-270
Trade, Transportation, & Utilities	36,615	349	1,389
<b>TOTAL</b>	<b>173,911</b>	<b>542</b>	<b>1,335</b>

## Size Class Employment Composition 3rd Quarter 2013



\*Counties in WDA: Bailey, Cochran, Crosby, Dickens, Floyd, Garza, Hale, Hockley, King, Lamb, Lubbock, Lynn, Motley, Terry, & Yoakum