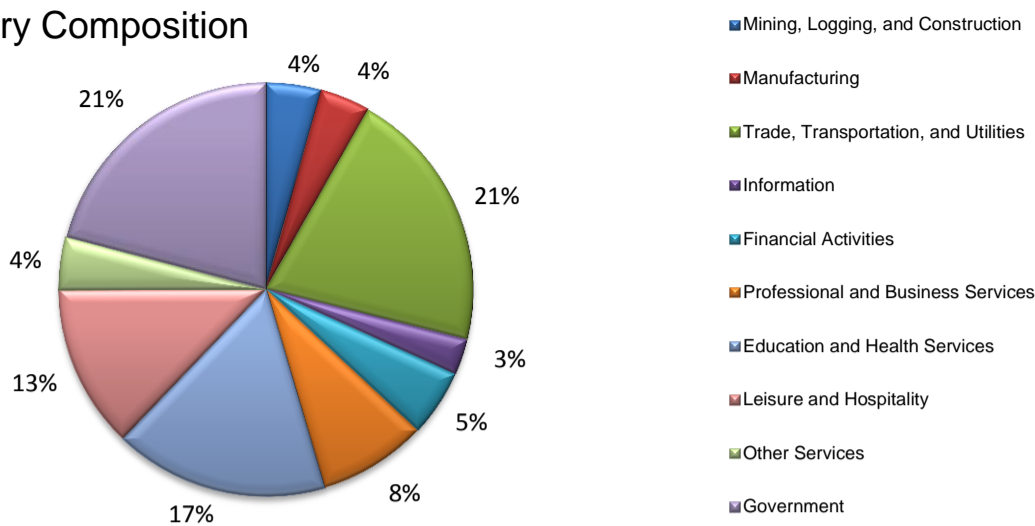
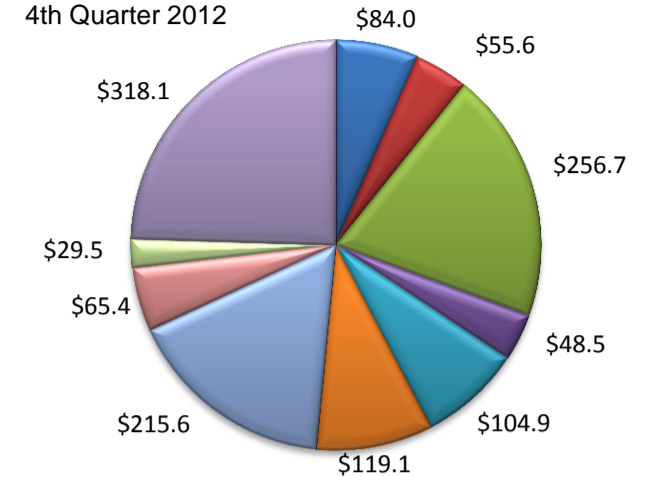


(Crosby, Lubbock)

Industry Composition



Wages by Industry (in millions)



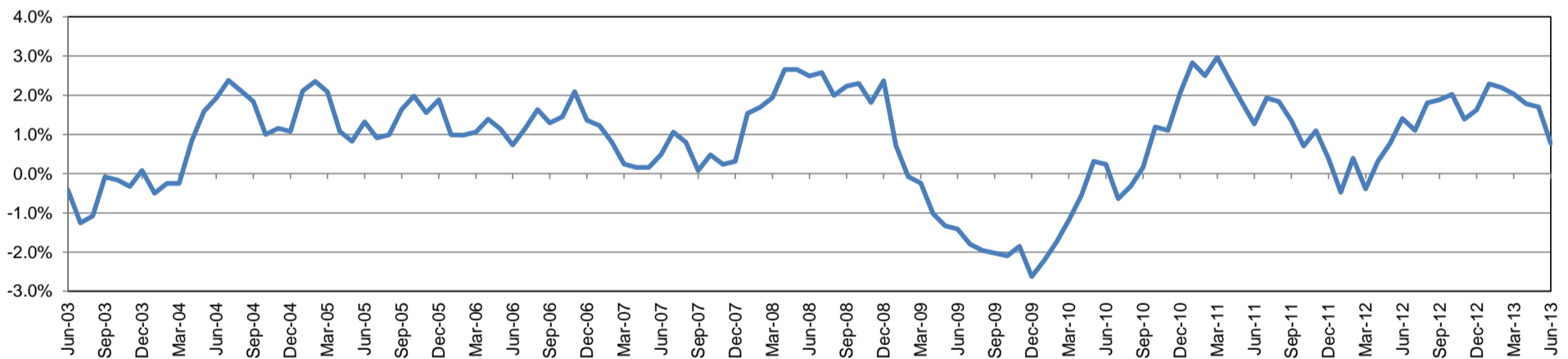
Employment by Industry

	Jun-13	May-13	Jun-12	Monthly Change		Annual Change	
				Actual	%	Actual	%
Total Nonfarm	130,500	131,700	129,500	-1,200	-0.9%	1,000	0.8%
Mining, Logging, and Construction	5,600	5,800	5,700	-200	-3.5%	-100	-1.8%
Manufacturing	5,100	5,100	5,000	0	0.0%	100	2.0%
Trade, Transportation, and Utilities	27,000	27,000	26,300	0	0.0%	700	2.7%
Information	3,700	3,700	3,800	0	0.0%	-100	-2.6%
Financial Activities	6,800	6,800	6,800	0	0.0%	0	0.0%
Professional and Business Services	11,100	11,100	10,900	0	0.0%	200	1.8%
Education and Health Services	21,800	21,900	21,900	-100	-0.5%	-100	-0.5%
Leisure and Hospitality	16,700	17,400	16,200	-700	-4.0%	500	3.1%
Other Services	5,400	5,400	5,400	0	0.0%	0	0.0%
Government	27,300	27,500	27,500	-200	-0.7%	-200	-0.7%

Industry Size Class December 2012

Size Class	Employees per firm	Number of Firms	Employment in Size Class	% Total Employment
9	1000+	11	29,967	23.1%
8	500-999	11	6,905	5.3%
7	250-499	31	10,720	8.3%
6	100-249	151	22,056	17.0%
5	50-99	216	14,841	11.4%
4	20-49	658	20,063	15.5%
3	10-19	829	11,406	8.8%
2	5-9	1,149	7,652	5.9%
1	1-4	2,986	6,054	4.7%
0	0	405	0	0.0%
Total		6,447	129,664	100.0%

Annual Growth Rate for Total Nonagricultural Employment



Unemployment Information (all estimates in thousands)

	Lubbock MSA				Texas (Actual)				United States (Actual)			
	C.L.F.	Emp.	Unemp.	Rate	C.L.F.	Emp.	Unemp.	Rate	C.L.F.	Emp.	Unemp.	Rate
Jun-13	147.4	138.4	9.0	6.1	12,847.8	11,957.0	890.8	6.9	157,089.0	144,841.0	12,248.0	7.8
May-13	148.2	140.4	7.8	5.3	12,793.9	11,963.7	830.2	6.5	155,734.0	144,432.0	11,302.0	7.3
Jun-12	147.3	137.8	9.5	6.4	12,684.2	11,738.1	946.1	7.5	156,385.0	143,202.0	13,184.0	8.4

Historical Unemployment Rates

