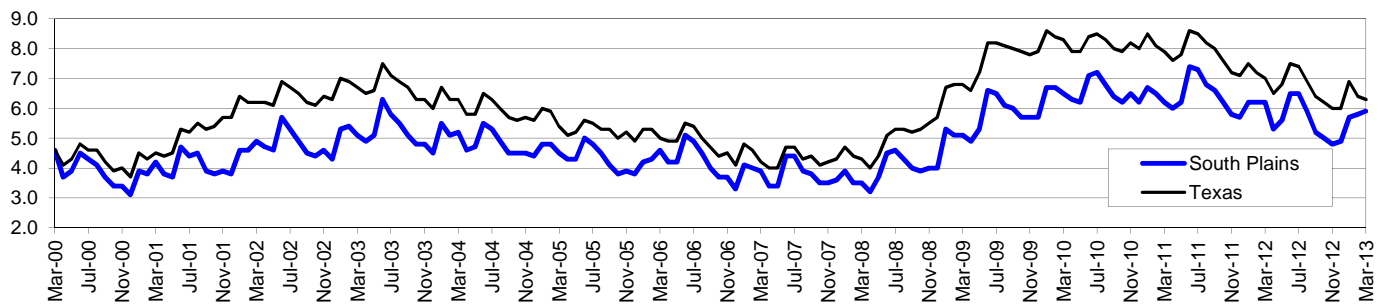


# South Plains Workforce Development Area\*

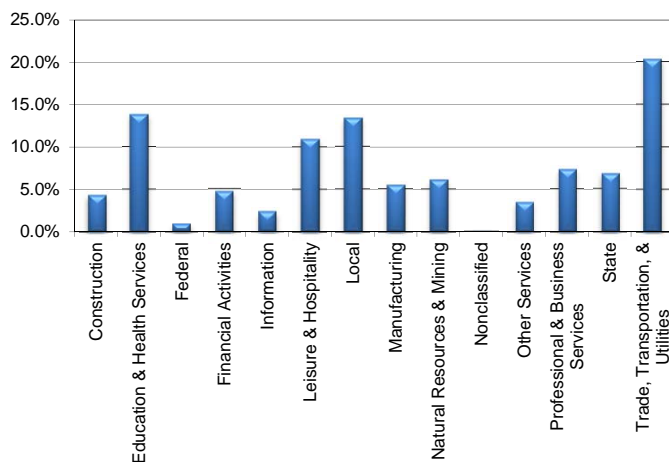
March 2013

| South Plains WDA |         |          |            |      | Texas  |            |            |            |      |
|------------------|---------|----------|------------|------|--------|------------|------------|------------|------|
|                  | CLF     | Employed | Unemployed | Rate |        | CLF        | Employed   | Unemployed | Rate |
| Mar-13           | 208,483 | 196,096  | 12,387     | 5.9  | Mar-13 | 12,686,094 | 11,885,771 | 800,323    | 6.3  |
| Feb-13           | 208,346 | 196,267  | 12,079     | 5.8  | Feb-13 | 12,662,092 | 11,845,698 | 816,394    | 6.4  |
| Mar-12           | 208,440 | 195,462  | 12,978     | 6.2  | Mar-12 | 12,548,713 | 11,671,807 | 876,906    | 7.0  |

## Historical Unemployment Rates



## South Plains WDA Industry Composition 3rd Quarter 2012



## Total WDA Claims

### Continued Claims for the Week of the 12th

|           | Mar-13 | Feb-13 | Mar-12 | OTY |
|-----------|--------|--------|--------|-----|
| Continued | 2,471  | 2,064  | 2,203  | 268 |

### Texas Unemployment Insurance Claims

#### Continued Claims for the Week of the 12th

|           | Mar-13  | Feb-13  | Mar-12  | OTY    |
|-----------|---------|---------|---------|--------|
| Continued | 127,877 | 128,829 | 133,295 | -5,418 |

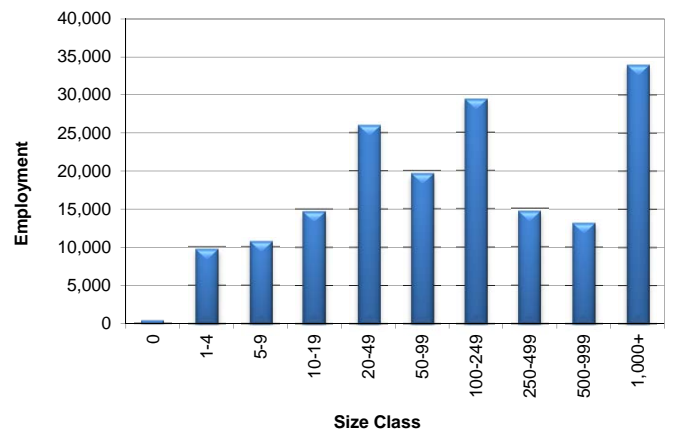
## South Plains WDA Average Weekly Wage

|                  | South Plains | Texas    |
|------------------|--------------|----------|
| 3rd Quarter 2012 | \$718.58     | \$929.84 |
| 2nd Quarter 2012 | \$695.54     | \$922.14 |
| 3rd Quarter 2011 | \$704.99     | \$931.54 |
| Quarter Change   | \$23.04      | \$7.70   |
| OTY Change       | \$13.59      | -\$1.70  |

## NAICS Covered Employment Quarterly Data 3rd Quarter 2012

| SUPER SECTOR                       | Employment     | Change     |              |
|------------------------------------|----------------|------------|--------------|
|                                    |                | Quarter    | Year         |
| Construction                       | 7,450          | 41         | 34           |
| Education & Health Services        | 23,850         | -269       | 337          |
| Federal                            | 1,656          | 12         | -20          |
| Financial Activities               | 8,183          | -4         | 136          |
| Information                        | 4,049          | -46        | -412         |
| Leisure & Hospitality              | 18,843         | -235       | 344          |
| Local                              | 23,029         | -602       | 171          |
| Manufacturing                      | 9,459          | -37        | -97          |
| Natural Resources & Mining         | 10,559         | 704        | 713          |
| Nonclassified                      | 37             | 10         | -57          |
| Other Services                     | 6,014          | -9         | 9            |
| Professional & Business Services   | 12,625         | 227        | 649          |
| State                              | 11,715         | -49        | 434          |
| Trade, Transportation, & Utilities | 35,065         | 206        | 499          |
| <b>TOTAL</b>                       | <b>172,534</b> | <b>-51</b> | <b>2,740</b> |

## Size Class Employment Composition 3rd Quarter 2012



\*Counties in WDA: Bailey, Cochran, Crosby, Dickens, Floyd, Garza, Hale, Hockley, King, Lamb, Lubbock, Lynn, Motley, Terry, & Yoakum