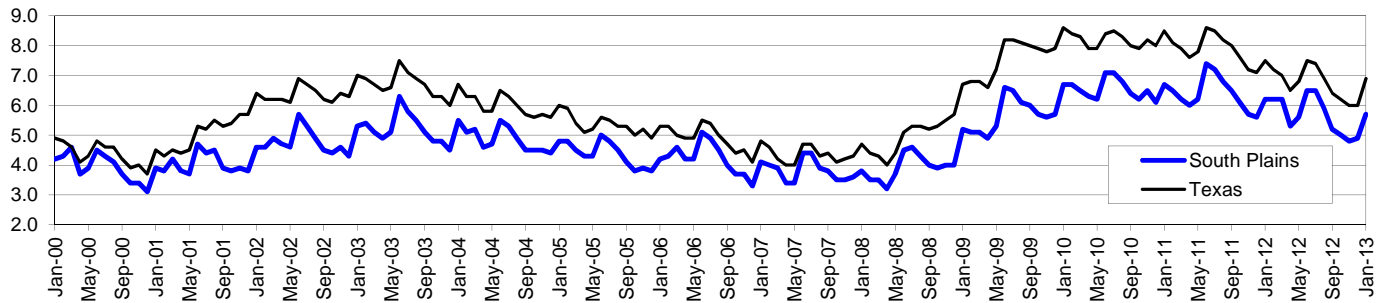


# South Plains Workforce Development Area\*

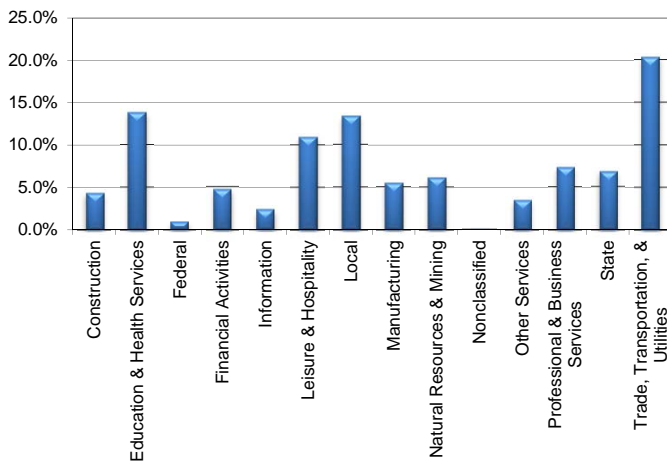
January 2013

South Plains WDA					Texas				
	CLF	Employed	Unemployed	Rate		CLF	Employed	Unemployed	Rate
Jan-13	207,557	195,668	11,889	5.7	Jan-13	12,655,394	11,782,758	872,636	6.9
Dec-12	207,066	196,906	10,160	4.9	Dec-12	12,634,533	11,870,344	764,189	6.0
Jan-12	207,564	194,774	12,790	6.2	Jan-12	12,486,708	11,552,047	934,661	7.5

### Historical Unemployment Rates



### South Plains WDA Industry Composition 3rd Quarter 2012



### Total WDA Claims

#### Continued Claims for the Week of the 12th

	Jan-13	Dec-12	Jan-12	OTY
Continued	1,373	1,208	1,582	-209

#### Texas Unemployment Insurance Claims

#### Continued Claims for the Week of the 12th

	Jan-13	Dec-12	Jan-12	OTY
Continued	136,785	129,052	146,345	-9,560

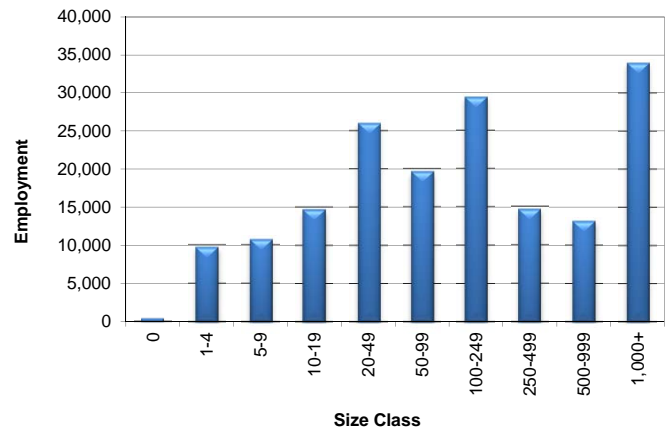
### South Plains WDA Average Weekly Wage

	South Plains	Texas
3rd Quarter 2012	\$718.58	\$929.84
2nd Quarter 2012	\$695.54	\$922.14
3rd Quarter 2011	\$704.99	\$931.54
Quarter Change	\$23.04	\$7.70
OTY Change	\$13.59	-\$1.70

### NAICS Covered Employment Quarterly Data 3rd Quarter 2012

SUPER SECTOR	Employment	Change	
		Quarter	Year
Construction	7,450	41	34
Education & Health Services	23,850	-269	337
Federal	1,656	12	-20
Financial Activities	8,183	-4	136
Information	4,049	-46	-412
Leisure & Hospitality	18,843	-235	344
Local	23,029	-602	171
Manufacturing	9,459	-37	-97
Natural Resources & Mining	10,559	704	713
Nonclassified	37	10	-57
Other Services	6,014	-9	9
Professional & Business Services	12,625	227	649
State	11,715	-49	434
Trade, Transportation, & Utilities	35,065	206	499
<b>TOTAL</b>	<b>172,534</b>	<b>-51</b>	<b>2,740</b>

### Size Class Employment Composition 3rd Quarter 2012



\*Counties in WDA: Bailey, Cochran, Crosby, Dickens, Floyd, Garza, Hale, Hockley, King, Lamb, Lubbock, Lynn, Motley, Terry, & Yoakum