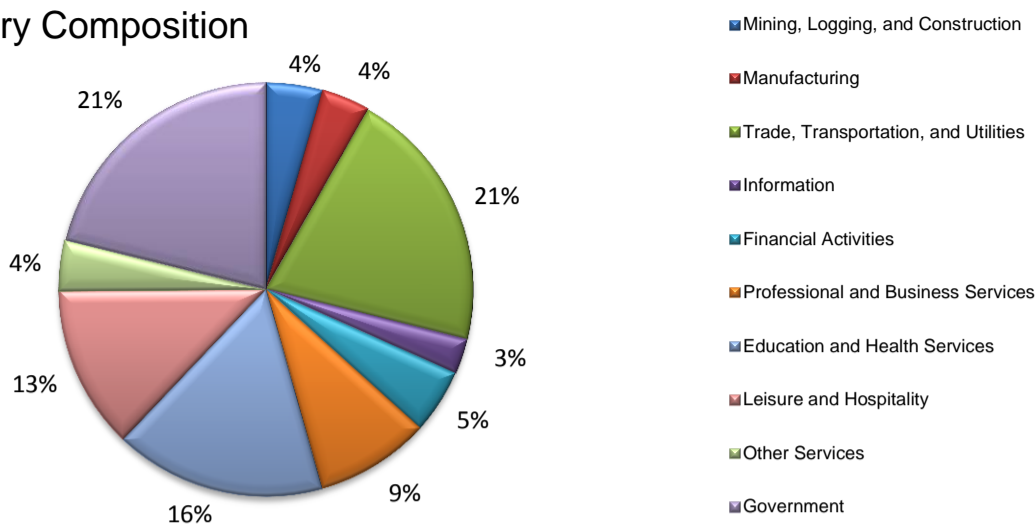
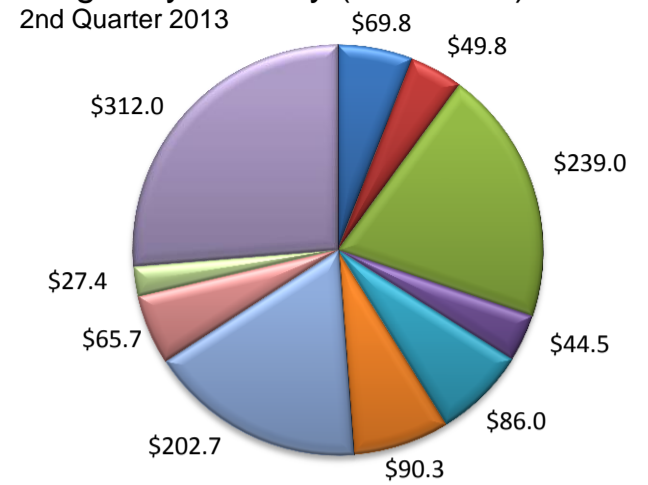


(Crosby, Lubbock)

Industry Composition



Wages by Industry (in millions)



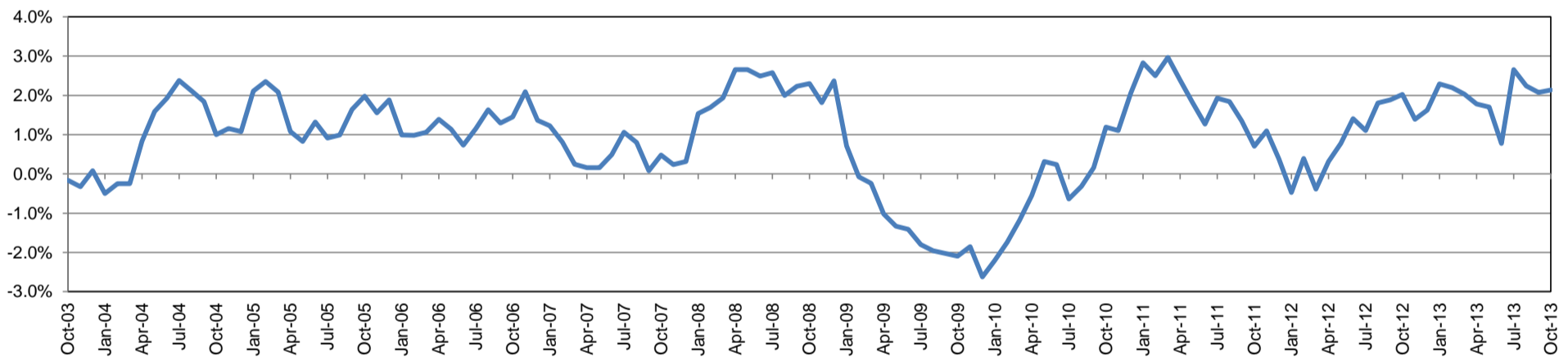
Employment by Industry

	Oct-13	Sep-13	Oct-12	Monthly Change		Annual Change	
				Actual	%	Actual	%
Total Nonfarm	134,100	132,700	131,300	1,400	1.1%	2,800	2.1%
Mining, Logging, and Construction	5,900	5,700	5,700	200	3.5%	200	3.5%
Manufacturing	5,100	5,000	5,000	100	2.0%	100	2.0%
Trade, Transportation, and Utilities	27,700	27,500	26,700	200	0.7%	1,000	3.8%
Information	3,700	3,700	3,800	0	0.0%	-100	-2.6%
Financial Activities	6,800	6,800	6,800	0	0.0%	0	0.0%
Professional and Business Services	12,000	11,600	11,600	400	3.5%	400	3.5%
Education and Health Services	22,100	21,900	21,900	200	0.9%	200	0.9%
Leisure and Hospitality	17,100	17,000	16,400	100	0.6%	700	4.3%
Other Services	5,300	5,300	5,500	0	0.0%	-200	-3.6%
Government	28,400	28,200	27,900	200	0.7%	500	1.8%

Industry Size Class

Size Class	Employees per firm	Number of Firms	June 2013		
			Employment in Size Class	% Total Employment	
9	1000+	9	27,666	21.3%	
8	500-999	10	6,906	5.3%	
7	250-499	38	13,144	10.1%	
6	100-249	145	21,342	16.4%	
5	50-99	210	14,779	11.4%	
4	20-49	671	20,696	15.9%	
3	10-19	857	11,835	9.1%	
2	5-9	1,163	7,690	5.9%	
1	1-4	2,888	5,920	4.6%	
0	0	508	0	0.0%	
Total			6,499	129,978	100.0%

Annual Growth Rate for Total Nonagricultural Employment



Unemployment Information (all estimates in thousands)

	Lubbock MSA				Texas (Actual)				United States (Actual)			
	C.L.F.	Emp.	Unemp.	Rate	C.L.F.	Emp.	Unemp.	Rate	C.L.F.	Emp.	Unemp.	Rate
Oct-13	149.1	142.1	7.0	4.7	12,784.1	12,013.9	770.2	6.0	154,918.0	144,144.0	10,773.0	7.0
Sep-13	148.8	141.3	7.5	5.0	12,833.7	12,024.4	809.3	6.3	155,536.0	144,651.0	10,885.0	7.0
Oct-12	147.7	140.5	7.2	4.9	12,667.7	11,882.2	785.5	6.2	155,779.0	144,039.0	11,741.0	7.5

Historical Unemployment Rates

