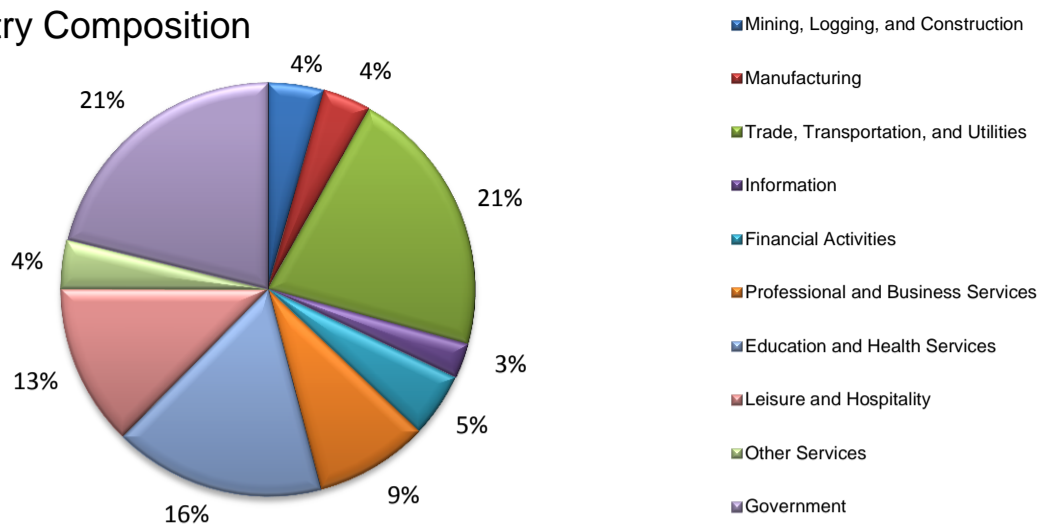
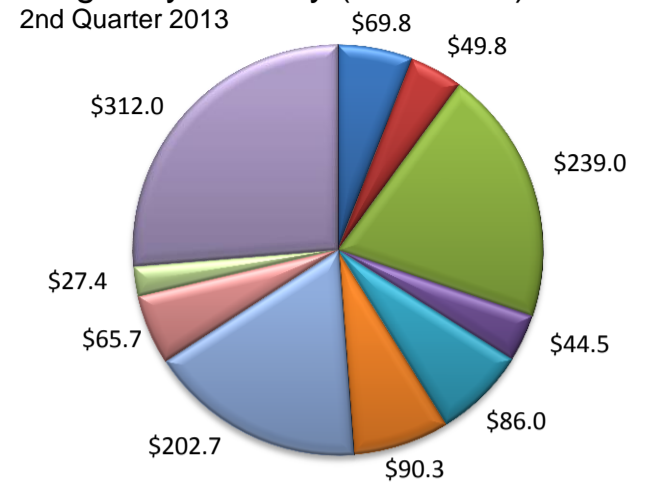


(Crosby, Lubbock)

Industry Composition



Wages by Industry (in millions)



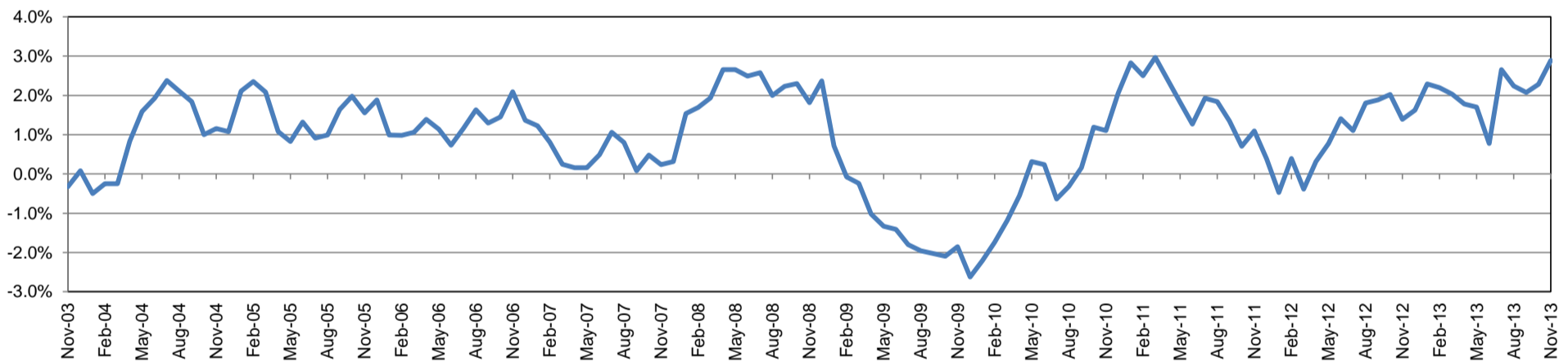
Employment by Industry

	Nov-13	Oct-13	Nov-12	Monthly Change		Annual Change	
				Actual	%	Actual	%
Total Nonfarm	135,300	134,300	131,500	1,000	0.7%	3,800	2.9%
Mining, Logging, and Construction	5,900	5,900	5,500	0	0.0%	400	7.3%
Manufacturing	5,100	5,100	5,000	0	0.0%	100	2.0%
Trade, Transportation, and Utilities	28,600	27,700	27,500	900	3.3%	1,100	4.0%
Information	3,700	3,700	3,700	0	0.0%	0	0.0%
Financial Activities	6,800	6,800	6,800	0	0.0%	0	0.0%
Professional and Business Services	12,000	12,000	11,100	0	0.0%	900	8.1%
Education and Health Services	22,300	22,200	21,800	100	0.5%	500	2.3%
Leisure and Hospitality	17,100	17,200	16,400	-100	-0.6%	700	4.3%
Other Services	5,200	5,300	5,400	-100	-1.9%	-200	-3.7%
Government	28,600	28,400	28,300	200	0.7%	300	1.1%

Industry Size Class

Size Class	Employees per firm	Number of Firms	June 2013		
			Employment in Size Class	% Total Employment	
9	1000+	9	27,666	21.3%	
8	500-999	10	6,906	5.3%	
7	250-499	38	13,144	10.1%	
6	100-249	145	21,342	16.4%	
5	50-99	210	14,779	11.4%	
4	20-49	671	20,696	15.9%	
3	10-19	857	11,835	9.1%	
2	5-9	1,163	7,690	5.9%	
1	1-4	2,888	5,920	4.6%	
0	0	508	0	0.0%	
Total			6,499	129,978	100.0%

Annual Growth Rate for Total Nonagricultural Employment



Unemployment Information (all estimates in thousands)

	Lubbock MSA				Texas (Actual)				United States (Actual)			
	C.L.F.	Emp.	Unemp.	Rate	C.L.F.	Emp.	Unemp.	Rate	C.L.F.	Emp.	Unemp.	Rate
Nov-13	149.8	143.1	6.7	4.5	12,855.6	12,110.5	745.1	5.8	155,046.0	144,775.0	10,271.0	6.6
Oct-13	149.1	142.1	7.0	4.7	12,784.1	12,014.1	770.0	6.0	154,918.0	144,144.0	10,773.0	7.0
Nov-12	147.1	140.2	6.9	4.7	12,629.4	11,874.4	755.0	6.0	154,953.0	143,549.0	11,404.0	7.4

Historical Unemployment Rates

