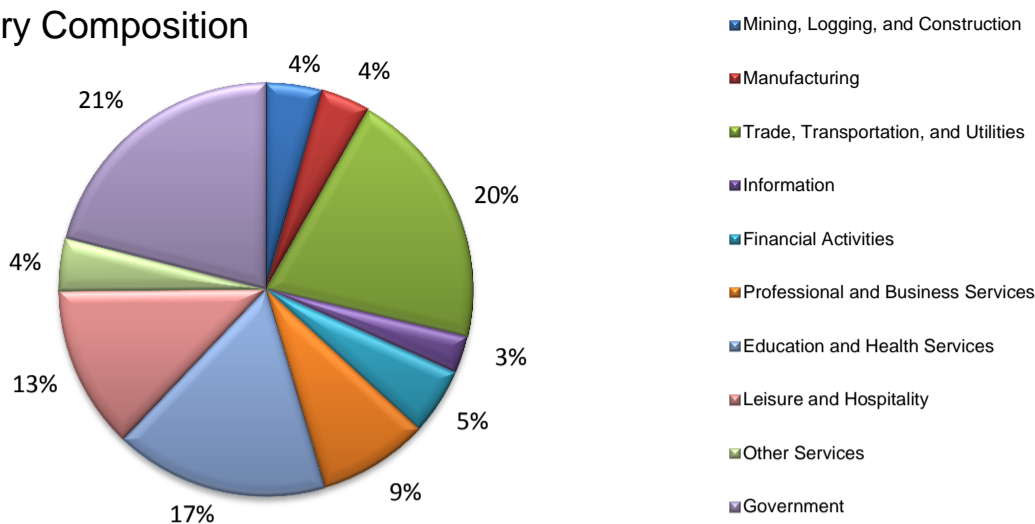
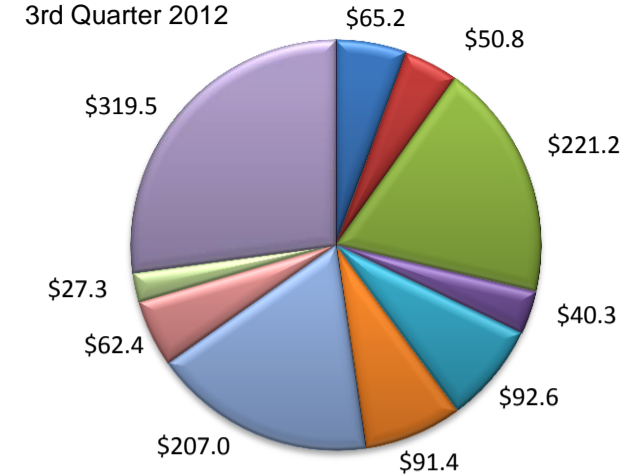


(Crosby, Lubbock)

Industry Composition



Wages by Industry (in millions)



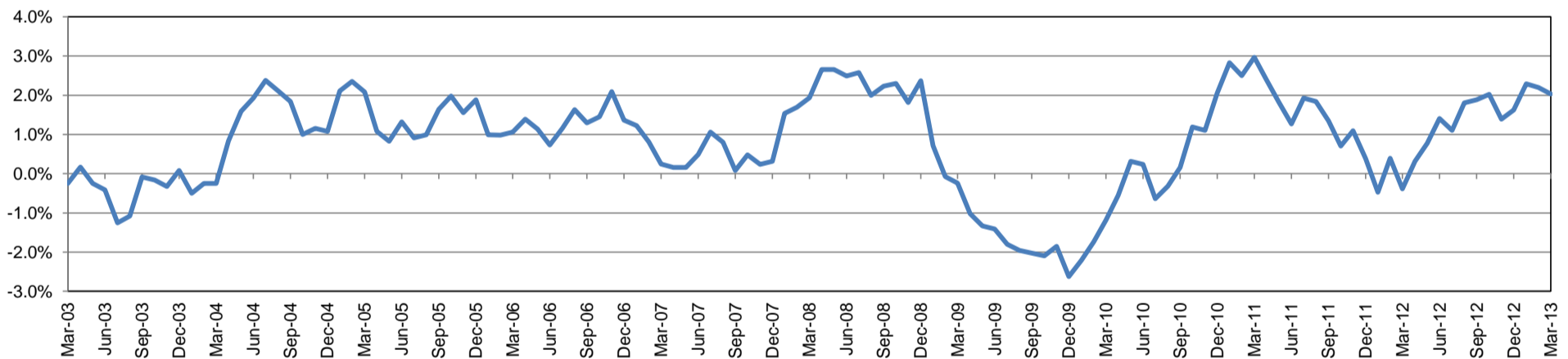
Employment by Industry

	Mar-13	Feb-13	Mar-12	Monthly Change		Annual Change	
				Actual	%	Actual	%
Total Nonfarm	130,400	130,400	127,800	0	0.0%	2,600	2.0%
Mining, Logging, and Construction	5,700	5,600	5,500	100	1.8%	200	3.6%
Manufacturing	5,000	5,000	4,900	0	0.0%	100	2.0%
Trade, Transportation, and Utilities	26,700	26,900	25,900	-200	-0.7%	800	3.1%
Information	3,800	3,800	3,800	0	0.0%	0	0.0%
Financial Activities	6,800	6,900	6,800	-100	-1.5%	0	0.0%
Professional and Business Services	11,200	11,100	10,700	100	0.9%	500	4.7%
Education and Health Services	21,800	21,800	21,500	0	0.0%	300	1.4%
Leisure and Hospitality	16,600	16,400	16,000	200	1.2%	600	3.8%
Other Services	5,400	5,400	5,300	0	0.0%	100	1.9%
Government	27,400	27,500	27,400	-100	-0.4%	0	0.0%

Industry Size Class September 2012

Size Class	Employees per firm	Number of Firms	Employment in Size Class	% Total Employment
9	1000+	9	27,454	21.5%
8	500-999	11	7,983	6.3%
7	250-499	32	11,189	8.8%
6	100-249	147	21,635	17.0%
5	50-99	205	14,068	11.0%
4	20-49	668	20,374	16.0%
3	10-19	824	11,278	8.8%
2	5-9	1,150	7,684	6.0%
1	1-4	2,867	5,889	4.6%
0	0	535	0	0.0%
Total		6,448	127,554	100.0%

Annual Growth Rate for Total Nonagricultural Employment



Unemployment Information (all estimates in thousands)

	Lubbock MSA				Texas (Actual)				United States (Actual)			
	C.L.F.	Emp.	Unemp.	Rate	C.L.F.	Emp.	Unemp.	Rate	C.L.F.	Emp.	Unemp.	Rate
Mar-13	146.6	138.9	7.7	5.3	12,686.1	11,885.8	800.3	6.3	154,512.0	142,698.0	11,815.0	7.6
Feb-13	146.5	139.0	7.5	5.1	12,662.1	11,845.7	816.4	6.4	154,727.0	142,228.0	12,500.0	8.1
Mar-12	145.5	137.0	8.5	5.8	12,548.7	11,671.8	876.9	7.0	154,316.0	141,412.0	12,904.0	8.4

Historical Unemployment Rates

