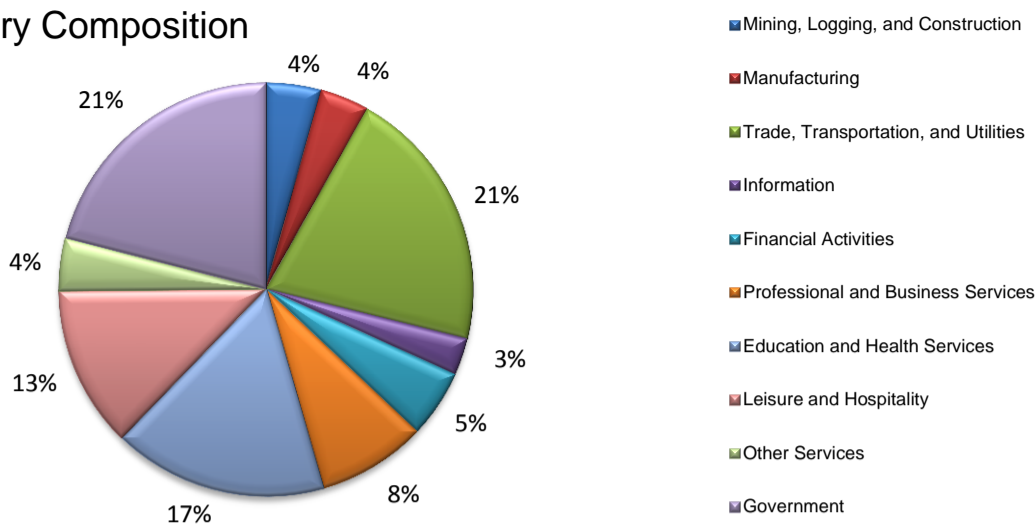
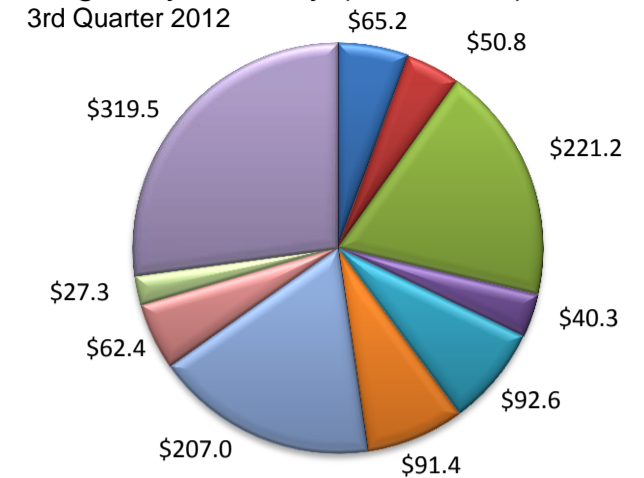


(Crosby, Lubbock)

Industry Composition



Wages by Industry (in millions)



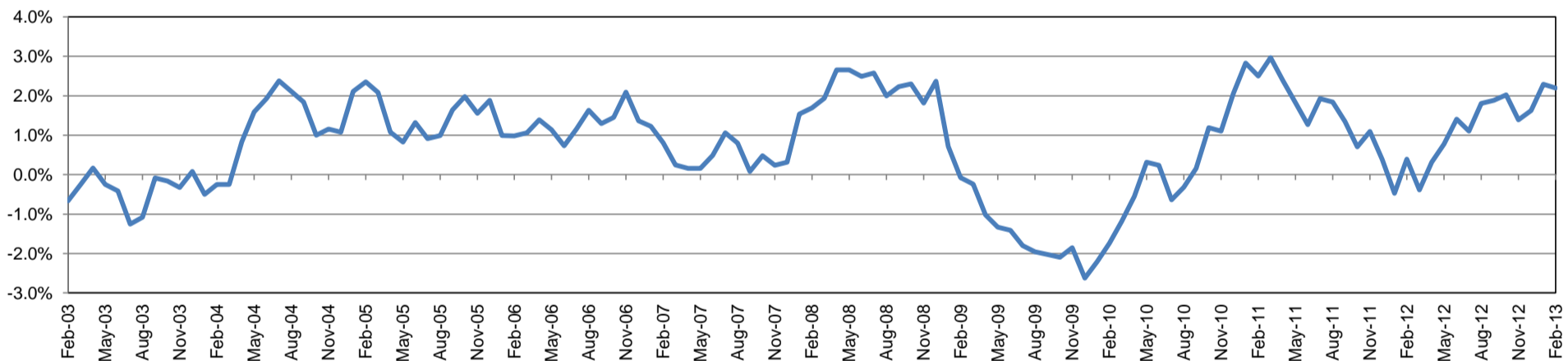
Employment by Industry

	Feb-13	Jan-13	Feb-12	Monthly Change		Annual Change	
				Actual	%	Actual	%
Total Nonfarm	130,400	129,500	127,600	900	0.7%	2,800	2.2%
Mining, Logging, and Construction	5,600	5,500	5,400	100	1.8%	200	3.7%
Manufacturing	5,000	5,000	4,900	0	0.0%	100	2.0%
Trade, Transportation, and Utilities	27,000	27,000	26,000	0	0.0%	1,000	3.9%
Information	3,800	3,800	3,900	0	0.0%	-100	-2.6%
Financial Activities	6,900	6,900	6,800	0	0.0%	100	1.5%
Professional and Business Services	11,100	10,900	10,700	200	1.8%	400	3.7%
Education and Health Services	21,800	21,500	21,500	300	1.4%	300	1.4%
Leisure and Hospitality	16,400	16,000	15,800	400	2.5%	600	3.8%
Other Services	5,400	5,400	5,200	0	0.0%	200	3.9%
Government	27,400	27,500	27,400	-100	-0.4%	0	0.0%

Industry Size Class September 2012

Size Class	Employees per firm	Number of Firms	Employment in Size Class	% Total Employment
9	1000+	9	27,454	21.5%
8	500-999	11	7,983	6.3%
7	250-499	32	11,189	8.8%
6	100-249	147	21,635	17.0%
5	50-99	205	14,068	11.0%
4	20-49	668	20,374	16.0%
3	10-19	824	11,278	8.8%
2	5-9	1,150	7,684	6.0%
1	1-4	2,867	5,889	4.6%
0	0	535	0	0.0%
Total		6,448	127,554	100.0%

Annual Growth Rate for Total Nonagricultural Employment



Unemployment Information (all estimates in thousands)

	Lubbock MSA				Texas (Actual)				United States (Actual)			
	C.L.F.	Emp.	Unemp.	Rate	C.L.F.	Emp.	Unemp.	Rate	C.L.F.	Emp.	Unemp.	Rate
Feb-13	146.6	139.1	7.5	5.1	12,662.6	11,845.6	817.0	6.5	154,727.0	142,228.0	12,500.0	8.1
Jan-13	146.7	138.7	8.0	5.5	12,655.1	11,782.5	872.6	6.9	154,794.0	141,614.0	13,181.0	8.5
Feb-12	145.5	137.2	8.3	5.7	12,520.8	11,613.1	907.7	7.2	154,114.0	140,684.0	13,430.0	8.7

Historical Unemployment Rates

