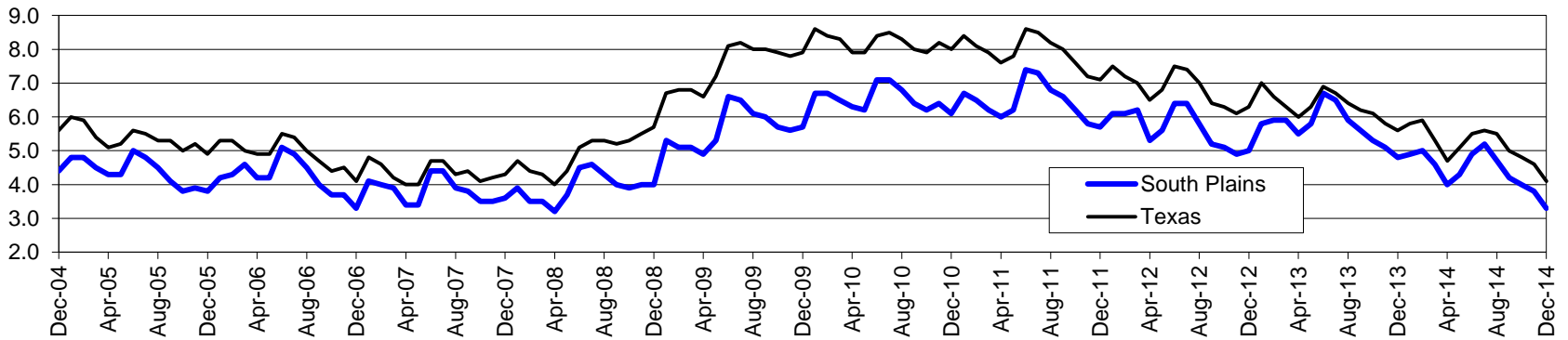


South Plains Workforce Development Area*

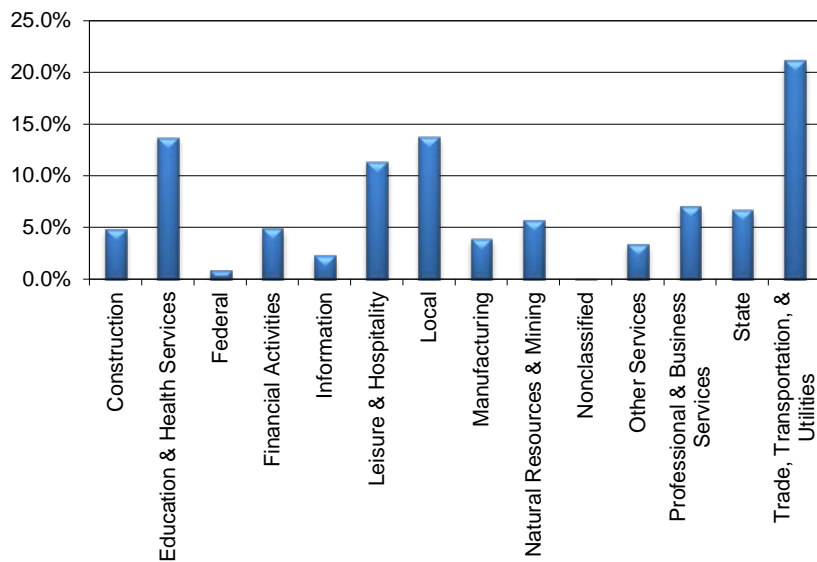
December 2014

South Plains WDA					Texas				
	CLF	Employed	Unemployed	Rate		CLF	Employed	Unemployed	Rate
Dec-14	208,341	201,366	6,975	3.3	Dec-14	13,005,442	12,466,775	538,667	4.1
Nov-14	210,184	202,178	8,006	3.8	Nov-14	13,068,856	12,464,326	604,530	4.6
Dec-13	209,407	199,294	10,113	4.8	Dec-13	12,864,202	12,141,677	722,525	5.6

Historical Unemployment Rates



South Plains WDA Industry Composition 2nd Quarter 2014



Total WDA Claims

Continued Claims for the Week of the 12th

	Dec-14	Nov-14	Dec-13	OTY
Continued	813	811	1,006	-193

Texas Unemployment Insurance Claims

Continued Claims for the Week of the 12th

	Dec-14	Nov-14	Dec-13	OTY
Continued	105,335	101,927	124,041	-18,706

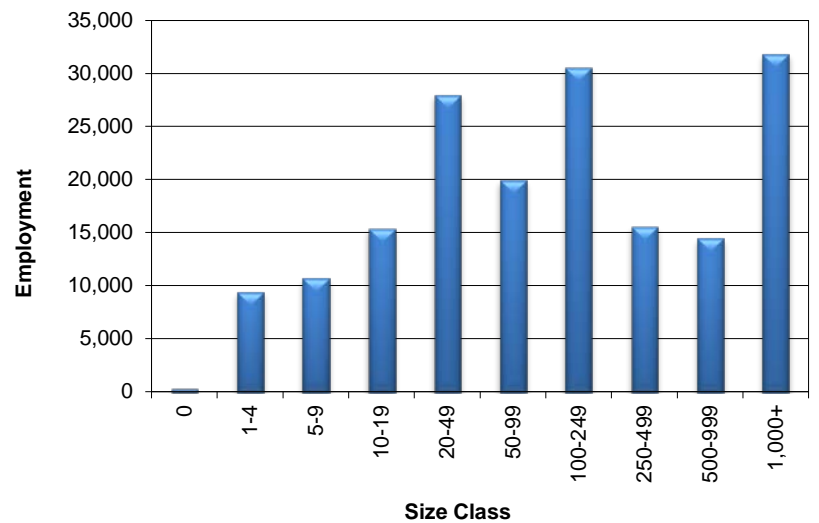
South Plains WDA Average Weekly Wage

	South Plains	Texas
2nd Quarter 2014	\$734.36	\$973.65
1st Quarter 2014	\$761.37	\$1,062.26
2nd Quarter 2013	\$709.71	\$944.12
Quarter Change	-\$27.01	-\$88.61
OTY Change	\$24.65	\$29.53

NAICS Covered Employment Quarterly Data 2nd Quarter 2014

SUPER SECTOR	Employment	Change	
		Quarter	Year
Construction	8,581	390	683
Education & Health Services	24,250	160	-97
Federal	1,531	-5	-58
Financial Activities	8,639	108	419
Information	4,000	-81	-169
Leisure & Hospitality	20,089	755	188
Local	24,409	122	848
Manufacturing	6,980	153	69
Natural Resources & Mining	10,098	448	134
Nonclassified	67	25	16
Other Services	5,972	175	-67
Professional & Business Services	12,520	128	89
State	11,975	171	-47
Trade, Transportation, & Utilities	37,255	342	989
TOTAL	176,366	2,891	2,997

Size Class Employment Composition 2nd Quarter 2014



*Counties in WDA: Bailey, Cochran, Crosby, Dickens, Floyd, Garza, Hale, Hockley, King, Lamb, Lubbock, Lynn, Motley, Terry, & Yoakum