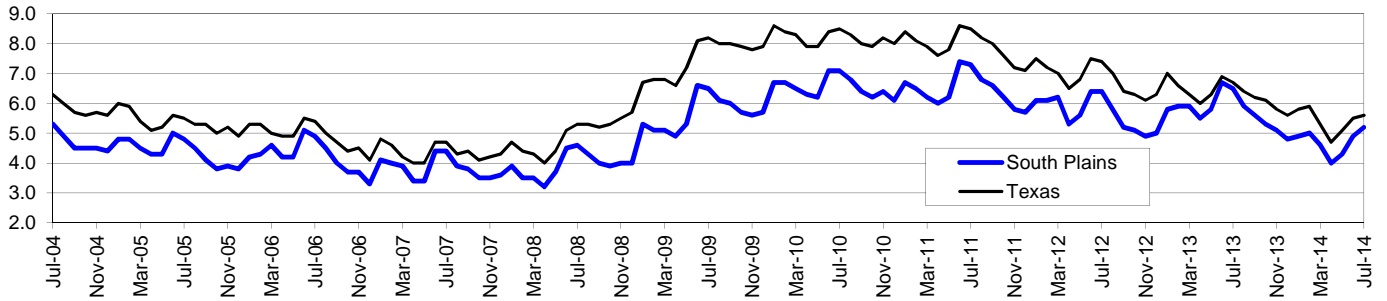


# South Plains Workforce Development Area\*

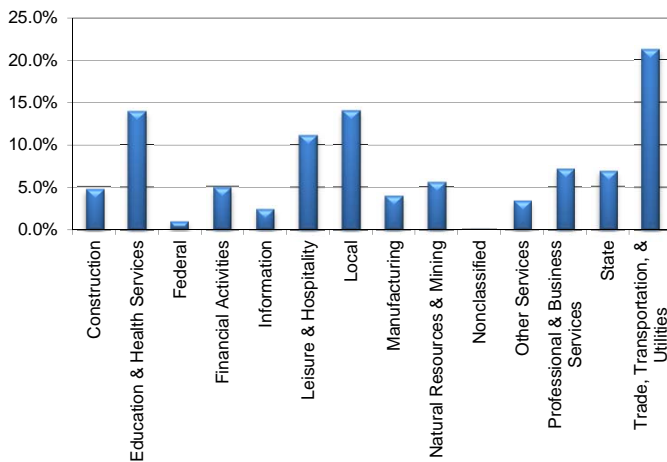
July 2014

South Plains WDA					Texas				
	CLF	Employed	Unemployed	Rate		CLF	Employed	Unemployed	Rate
Jul-14	211,315	200,288	11,027	5.2	Jul-14	13,079,602	12,349,672	729,930	5.6
Jun-14	209,720	199,401	10,319	4.9	Jun-14	13,031,947	12,321,206	710,741	5.5
Jul-13	210,761	197,161	13,600	6.5	Jul-13	12,905,019	12,039,214	865,805	6.7

### Historical Unemployment Rates



### South Plains WDA Industry Composition 1st Quarter 2014



### Total WDA Claims

#### Continued Claims for the Week of the 12th

	Jul-14	Jun-14	Jul-13	OTY
Continued	1,779	1,450	2,605	-826

#### Texas Unemployment Insurance Claims

#### Continued Claims for the Week of the 12th

	Jul-14	Jun-14	Jul-13	OTY
Continued	128,374	126,581	140,675	-12,301

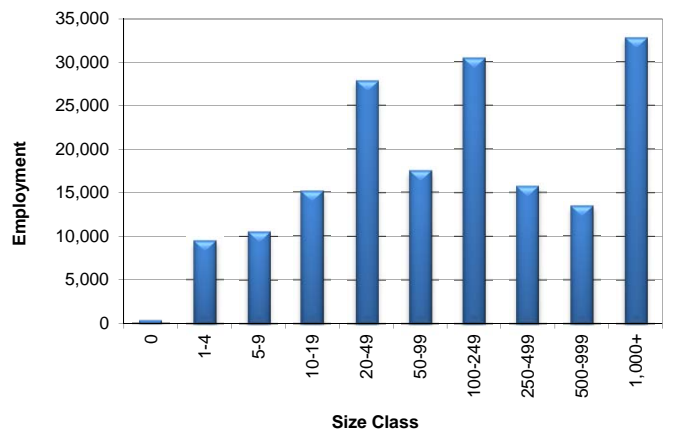
### South Plains WDA Average Weekly Wage

	South Plains	Texas
1st Quarter 2014	\$761.64	\$1,062.65
4th Quarter 2013	\$775.08	\$1,026.57
1st Quarter 2013	\$725.59	\$1,015.27
Quarter Change	-\$13.44	\$36.08
OTY Change	\$36.05	\$47.38

### NAICS Covered Employment Quarterly Data 1st Quarter 2014

SUPER SECTOR	Employment	Change	
		Quarter	Year
Construction	8,190	137	594
Education & Health Services	24,145	-391	56
Federal	1,536	-131	-98
Financial Activities	8,530	81	429
Information	4,081	-132	-69
Leisure & Hospitality	19,312	-190	245
Local	24,282	111	777
Manufacturing	6,814	15	-1,928
Natural Resources & Mining	9,636	-2,161	145
Nonclassified	43	-3	-32
Other Services	5,773	-196	-145
Professional & Business Services	12,405	-119	163
State	11,804	-58	-80
Trade, Transportation, & Utilities	36,874	-763	1,240
<b>TOTAL</b>	<b>173,425</b>	<b>-3,800</b>	<b>1,297</b>

### Size Class Employment Composition 1st Quarter 2014



\*Counties in WDA: Bailey, Cochran, Crosby, Dickens, Floyd, Garza, Hale, Hockley, King, Lamb, Lubbock, Lynn, Motley, Terry, & Yoakum